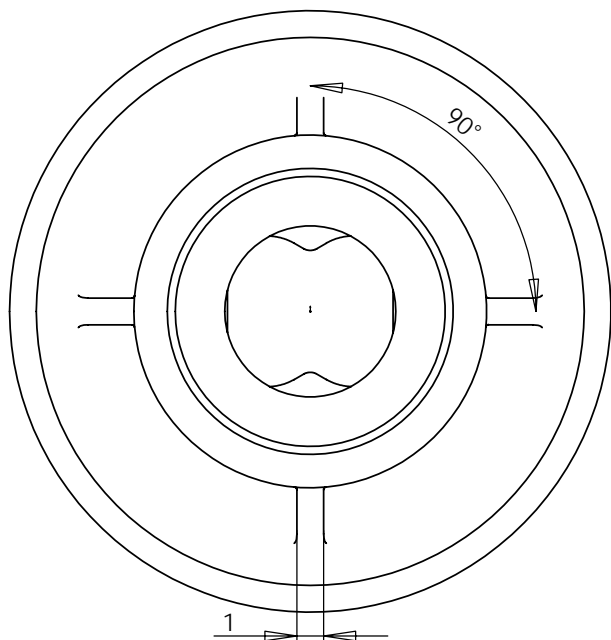
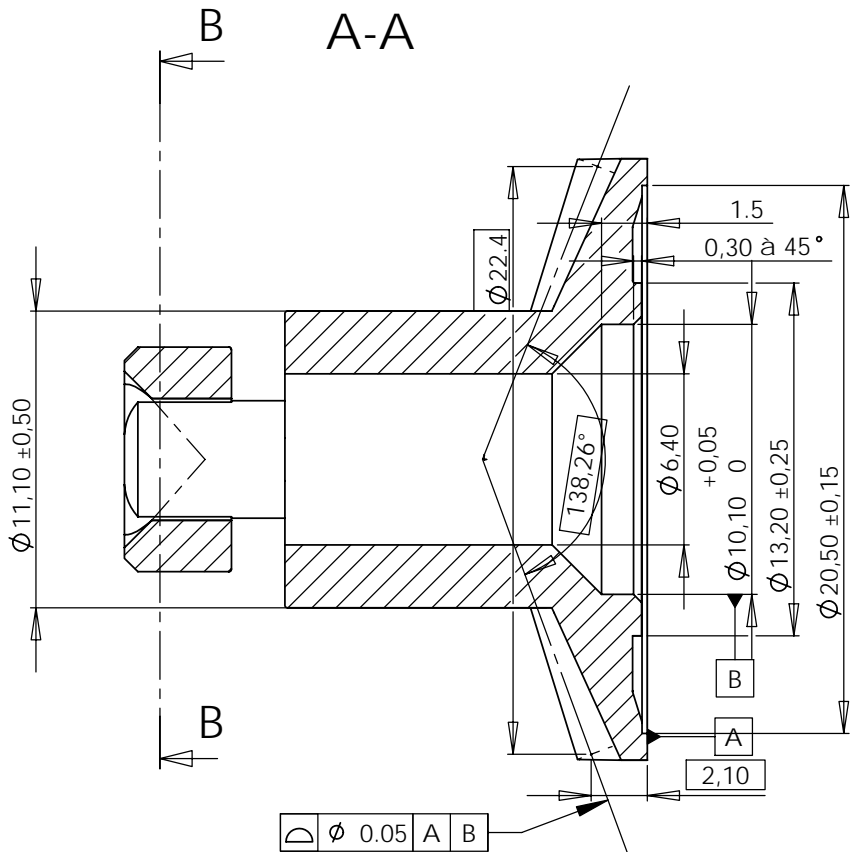
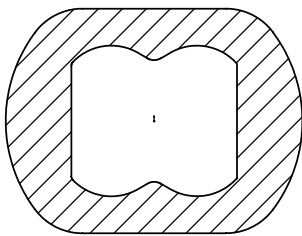


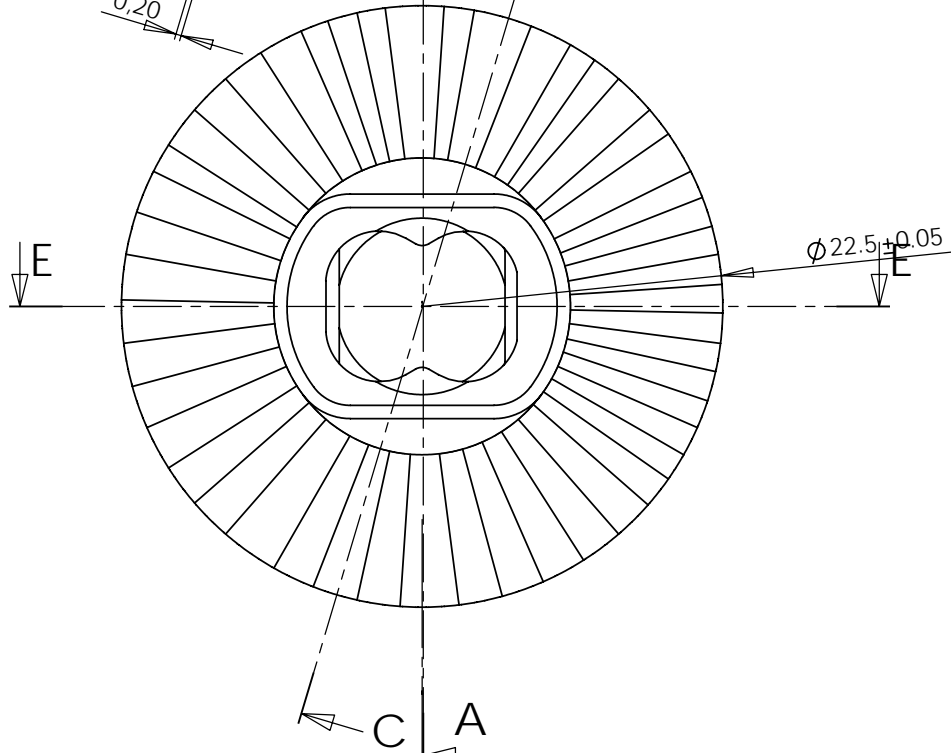
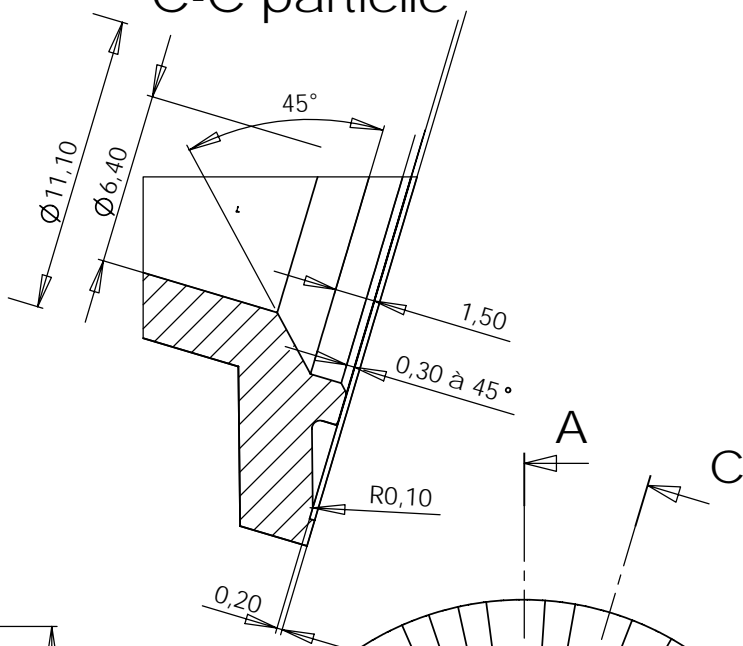
Vue en perspective Echelle 1:1



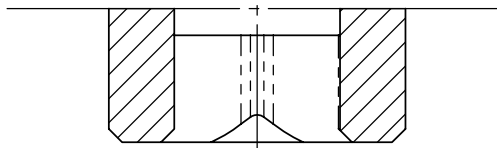
B-B



C-C partielle



E-E partielle



Caractéristiques de la denture conique :  
Module : 0.7  
Nombre de dents : 32  
Classe de précision : 10

			Radilon A	
Rep.	Nbr.	Désignation	Matière	Observ.
Echelle : 1:0.2		NOUVELLE ROUE CONIQUE		
Dessiné par : Daures				
Visa				
			N°.....	Rep. Modif. Date