

MR30



3-phase motors - 3x230/400V-50Hz

Output speed n_2 rpm	Output torque Nm	Transmission ratio	Motor speed n_1 rpm	Motor output kW	Self- locking	Limit switch range Output rotation	
	duty cycle 60%			duty cycle 60%		normal	lang
123,4	60	22,7:1	2800	1,1	So *	260	430
61,6	112	45,4:1	2800	1,1	So *	130	215
39	165	71,8:1	2800	1,1	So *	85	135
30,8	125	45,4:1	1400	0,6	So *	130	215
28,4	187	98,3:1	2800	1,1	So *	60	100
21,8	220	128,5:1	2800	1,1	Ss *	47	77
19,5	180	71,8:1	1400	0,6	So *	85	135
15,4	240	181,4:1	2800	1,1	Ss *	32	55
14,2	206	98,3:1	1400	0,6	So *	60	100
11,8	270	238,1:1	2800	1,1	Sd *	25	42
10,6	250	264,6:1	2800	1,1	Sd *	23	38
7,7	267	181,4:1	1400	0,6	Ss *	32	55
5,9	300	238,1:1	1400	0,6	Sd *	25	42
5,3	278	264,6:1	1400	0,6	Sd *	23	38
3,8	148 (40%)	181,4:1	700	0,15 (40%)	Ss *	32	55
2,9	170 (40%)	238,1:1	700	0,15 (40%)	Sd *	25	42
2,6	160 (40%)	264,6:1	700	0,15 (40%)	Sd *	23	38

Single-phase motors - 1x230V-50Hz

Output speed n_2 rpm	Output torque Nm (40% duty cycle) **	Transmission ratio	Motor speed n_1 rpm	Motor output kW	Self- locking
123,4	36,0	22,7:1	2800	0,66	So *
61,6	67,2	45,4:1	2800	0,66	So *
39,0	99,0	71,8:1	2800	0,66	So *
30,8	73,3	45,4:1	1400	0,36	So *
28,4	112,2	98,3:1	2800	0,66	So *
21,8	132,0	128,5:1	2800	0,66	Ss *
19,5	108,0	71,8:1	1400	0,36	So *
15,4	144,0	181,4:1	2800	0,66	Ss *
14,1	122,3	98,3:1	1400	0,36	So *
11,8	162,0	238,1:1	2800	0,66	Sd *
10,9	144,0	128,5:1	1400	0,36	Ss *
10,6	150,0	264,6:1	2800	0,66	Sd *
7,7	157,1	181,4:1	1400	0,36	Ss *
5,9	176,7	238,1:1	1400	0,36	Sd *
5,3	163,4	264,6:1	1400	0,36	Sd *

24V DC shunt-wound motor

Output speed n_2 rpm	Output torque Nm	Self-locking	Transmission ratio
66	52	So *	22,7 : 1
33	97	So *	45,4 : 1
21	141	So *	71,8 : 1
15	162	So *	98,3 : 1
11,5	190	Ss *	128,5 : 1
8	205	Ss *	181,4 : 1
6,5	220	Sd *	238,1 : 1
5,5	200	Sd *	264,6 : 1

P = 0,5 kW
 I_N = 30 A
 40% duty cycle

The output speed of Compacta gear motors with DC motors varies with the output torque.

Additional output table information:

*So = No self-locking
 Ss = Static self-locking
 Sd = Dynamic self-locking

** The stated single-phase torques are operational torques. The starting torque may be only 66% of the stated catalog torque. Please contact the manufacturer in case max. torque is required.

The gear motor can be overloaded by 50% for brief periods. Single-phase AC and DC motors may stall.

Please contact the manufacturer in case of the following operating conditions:

- Temperatures below 0°C (single-phase AC and DC motors: below 10°C)
- Temperatures above 40°C
- Strong vibrations

Subject to technical changes

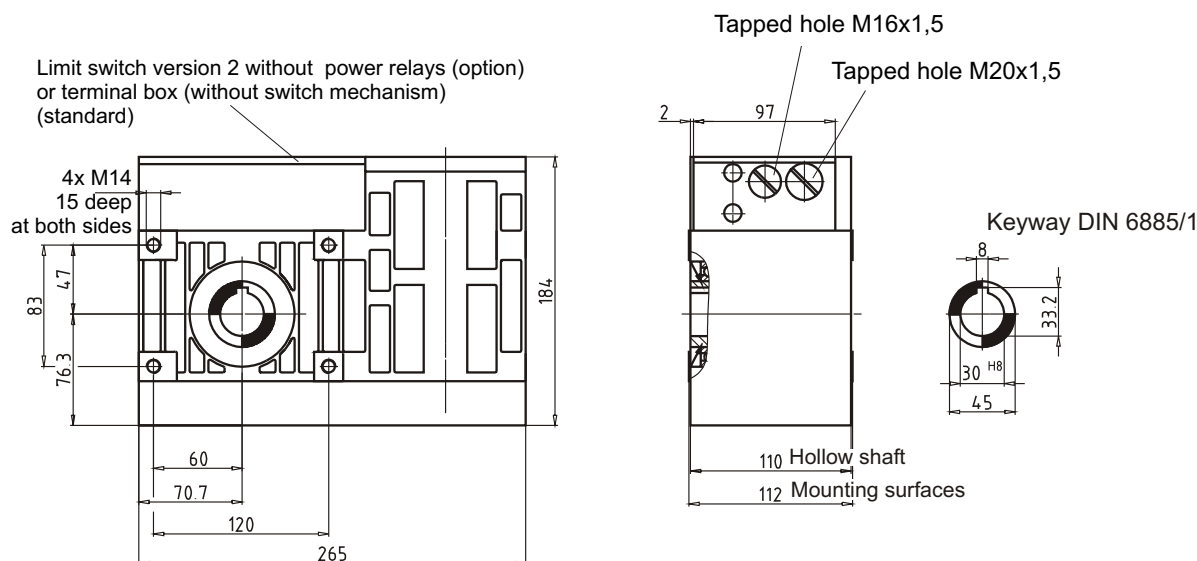
Framo Morat GmbH & Co. KG
 Höchst 7 • D-79871 Eisenbach

Tel.: +49 (0) 7657 / 88-0
 Fax: +49 (0) 7657 / 88-333

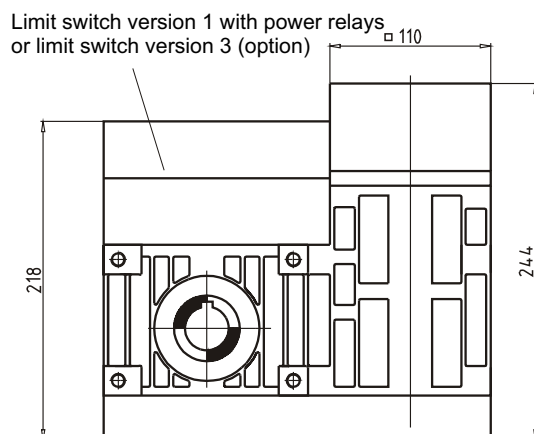
www.framo-morat.com
 info@framo-morat.com

Dimensions

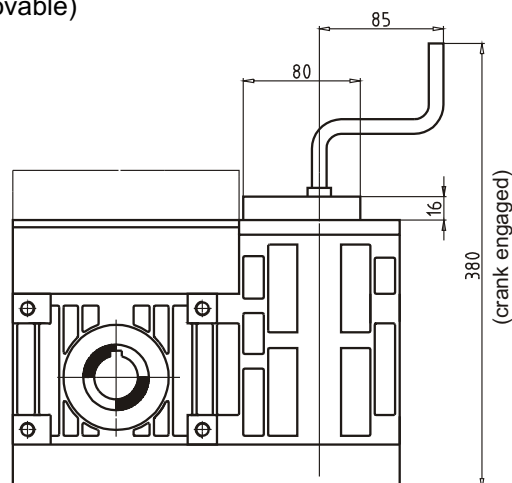
Standard drive with 3-phase or single-phase AC motor



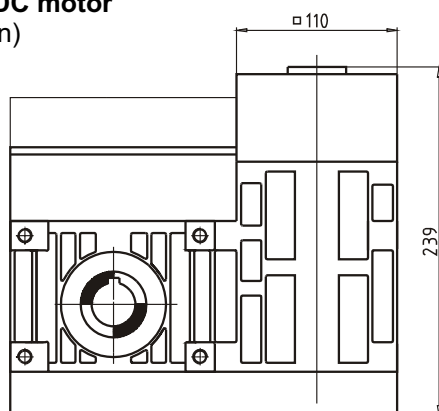
with motor brake
(option)



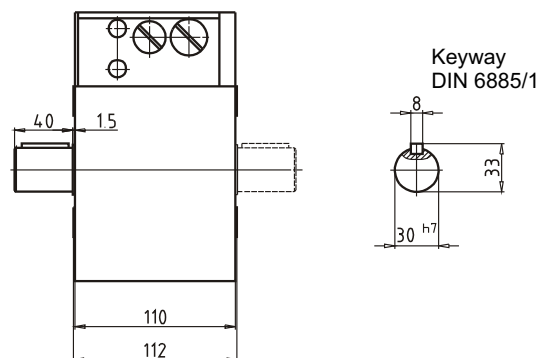
Hand crank with elec. interlock (option)
(removable)



with DC motor
(option)



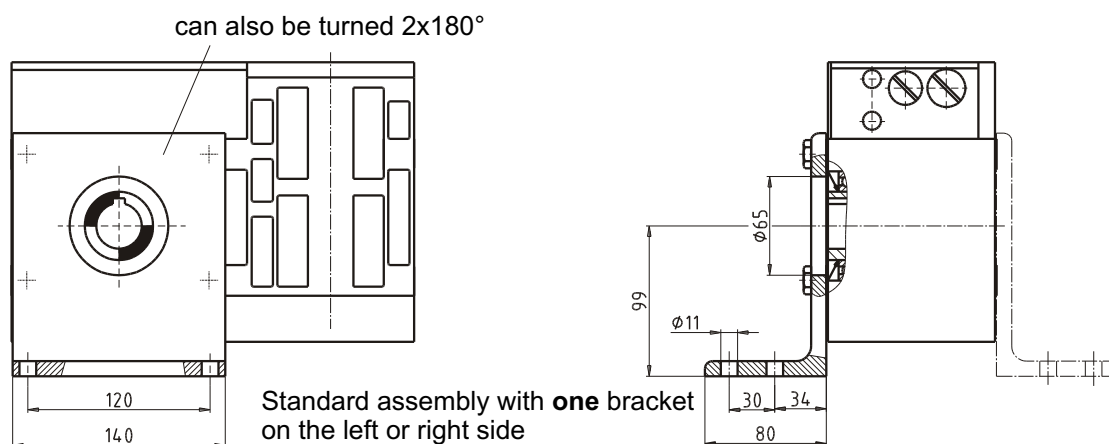
with stub shaft (option)
(left and/or right)



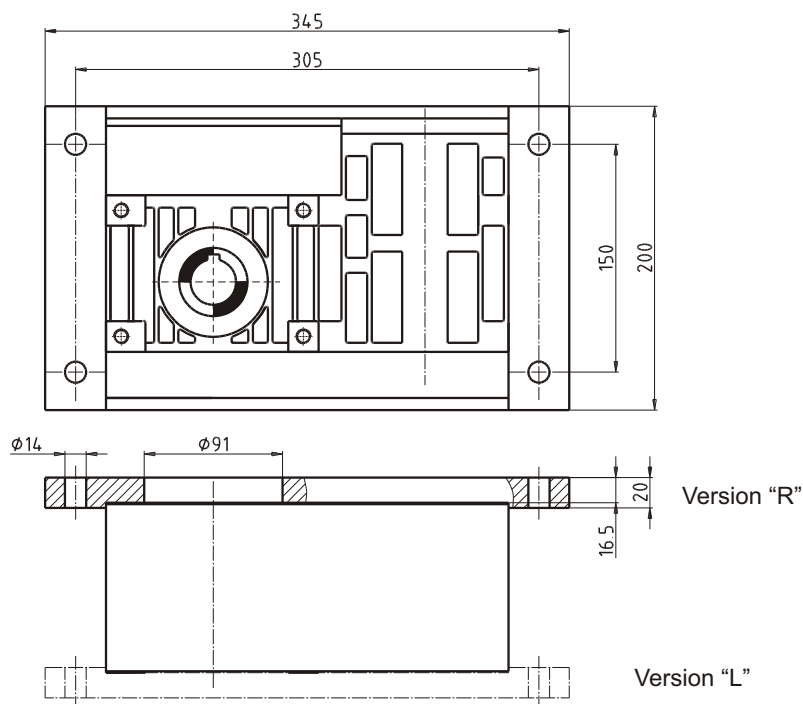
Some options may be combined

Dimensions

with steel bracket
(option)

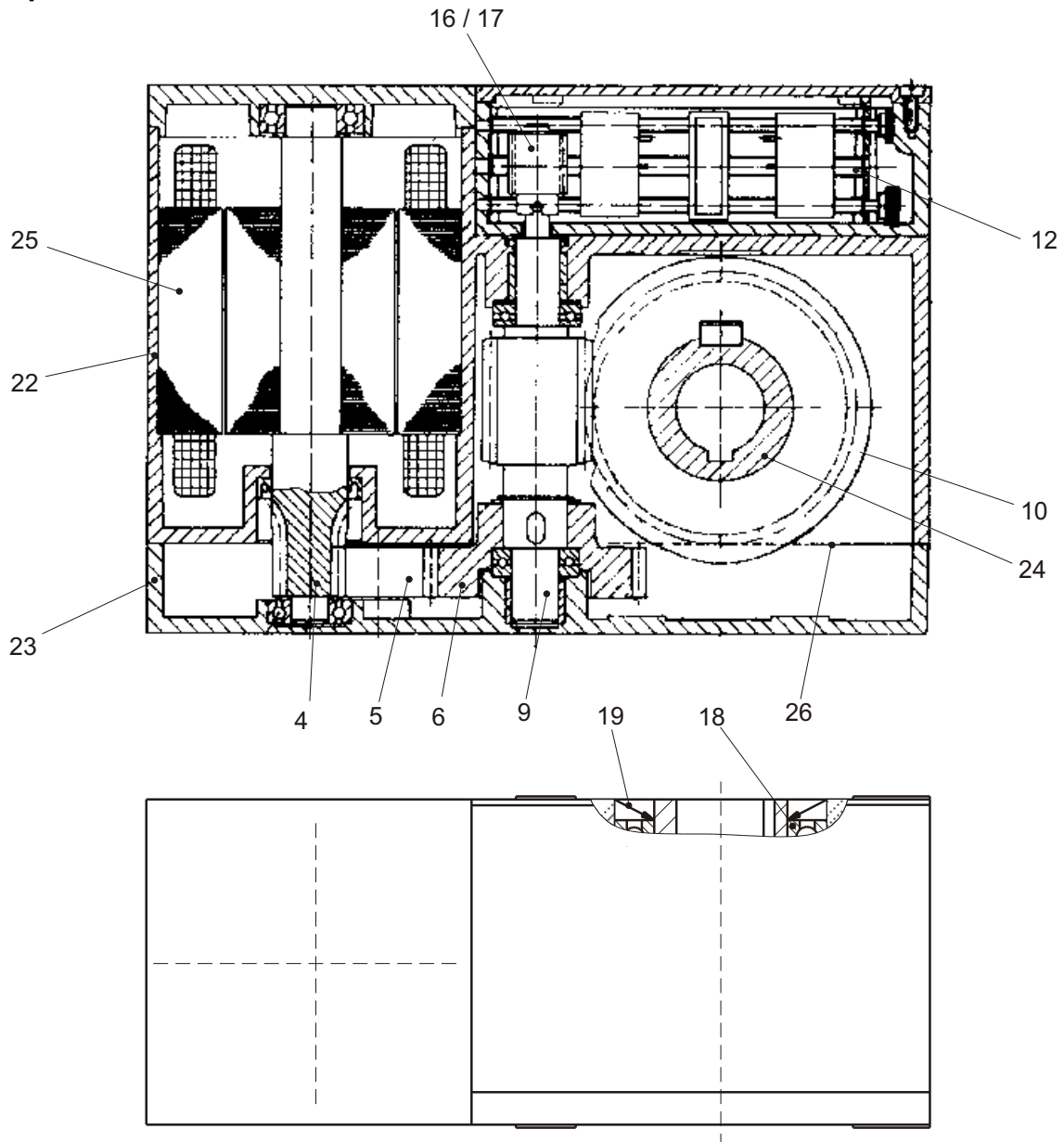


with torque support plate
(option)



Some options may be combined

Spare parts



Item	Designation	Article No.
4	Rotor shaft complete	Serial No.
5	Idler gear	6-40-50.14
6	Spur gear	6-40-50.16
9	Worm shaft A63	Serial No.
10	Worm wheel A63	Serial No.
16	Control worm	Serial No.
(17)	Helical gear	Serial No.
18	Deep-groove ball bearing	00300101600910
19	Radial shaft seal	00200104575102
22	Gearbox case	6-40-50.01
23	Gearbox cover	6-40-70.01
24	Hollow shaft	6-40-101.01
25	Stator	Serial No.
26	Flat seal	6-30-50.02A

Spare parts can only be supplied if the serial number is stated

Subject to technical changes

Framo Morat GmbH & Co. KG
Höchst 7 • D-79871 Eisenbach

Tel.: +49 (0) 7657 / 88-0
Fax: +49 (0) 7657 / 88-333

www.framo-morat.com
info@framo-morat.com