

régation Arts Appliqués, session 2019.
Image et Communication
sujet n°1

Documents :

1.1

Le Murmure

Typographie créée par Jérémy Landes (Studio Triple), fonderie Velvetyne

Date de création : 2018

1.2

La Parisine

Typographie du métro parisien créée par Jean François Porchez, typofonderie

Date de création : 1996

1.3

Identité graphique du 104 Paris

Graphiste : Experimental Jetset

Date de création : 2008

Institution culturelle qui a ouvert ses portes dans le bâtiment des anciennes pompes funèbres parisiennes situées dans le 19e arrondissement.

Usage de la typo Futura créée en 1927 par Paul Renner.

ABCDEFGHIJKL
 MNOPQRST
 UVWXYZ
 a b e d e f g h i j k l m n o p q
 r s t u v w x y z

&0123456789

MMMMMMMMM
 WWZZNNMMAA
 RRQEEKKKQOQ
 ffrpmmnnnn

Love alternates

TYPEFACES

CUSTOM

ABOUT

WORKSHOPS

IN USE

NEWS

DONATE

LIBRE FONTS?

We design many open source fonts. You decide what you can use, modify and redistribute them freely! Learn more and contribute to the adventure of our welcome Type Foundry by reading our "about" page!

LAST NEWS

[at Fig](#), [Festival roman](#), [Type Workshop](#), [Image Mendi](#)

FONTS & DESIGNERS

? R E N O M ?

| |
|--|
| Arabic Cyrillic Greek Hebrew Latin Latin Extended Latin Extended Additional Latin Extended Cyrillic Latin Extended Greek Latin Extended North Latin Extended South Latin Extended Turkish Latin Extended Vietnamese Latin Extended Yugoslav Latin Extended Zs Latin Extended Zs Cyrillic Latin Extended Zs Greek Latin Extended Zs North Latin Extended Zs South Latin Extended Zs Turkish Latin Extended Zs Vietnamese Latin Extended Zs Yugoslav |
| Arabic Cyrillic Greek Hebrew Latin Latin Extended Latin Extended Additional Latin Extended Cyrillic Latin Extended Greek Latin Extended North Latin Extended South Latin Extended Turkish Latin Extended Vietnamese Latin Extended Yugoslav Latin Extended Zs Latin Extended Zs Cyrillic Latin Extended Zs Greek Latin Extended Zs North Latin Extended Zs South Latin Extended Zs Turkish Latin Extended Zs Vietnamese Latin Extended Zs Yugoslav |
| Arabic Cyrillic Greek Hebrew Latin Latin Extended Latin Extended Additional Latin Extended Cyrillic Latin Extended Greek Latin Extended North Latin Extended South Latin Extended Turkish Latin Extended Vietnamese Latin Extended Yugoslav Latin Extended Zs Latin Extended Zs Cyrillic Latin Extended Zs Greek Latin Extended Zs North Latin Extended Zs South Latin Extended Zs Turkish Latin Extended Zs Vietnamese Latin Extended Zs Yugoslav |
| Arabic Cyrillic Greek Hebrew Latin Latin Extended Latin Extended Additional Latin Extended Cyrillic Latin Extended Greek Latin Extended North Latin Extended South Latin Extended Turkish Latin Extended Vietnamese Latin Extended Yugoslav Latin Extended Zs Latin Extended Zs Cyrillic Latin Extended Zs Greek Latin Extended Zs North Latin Extended Zs South Latin Extended Zs Turkish Latin Extended Zs Vietnamese Latin Extended Zs Yugoslav |

Le Murmure

Amazingly few disotheques provide jukeboxes

A Dutch angle or Batman Angle is achieved by tilting the camera off to the side so that the shot is composed with the horizon at an angle to the vertical.

IN PHYSICS, THE SHOWER-CURTAIN EFFECT IS THE PHENOMENON IN WHICH A SHOWER CURTAIN GETS BLOWN INWARD WITH A RUNNING SHOWER. THE PROBLEM OF THE CAUSE OF THIS EFFECT HAS BEEN FEATURED IN SCIENTIFIC AMERICAN MAGAZINE, WITH SEVERAL THEORIES GIVEN TO EXPLAIN THE PHENOMENON BUT NO DEFINITE CONCLUSION. AS A SECOND MEANING, THE FACT THAT NEARBY PHASE FRONT DISTORTIONS OF AN OPTICAL WAVE ARE MORE SEVERE THAN REMOTE DISTORTIONS OF THE

In physics, the shower curtain effect is the phenomenon in which a shower curtain gets blown inward with a running shower. The problem of the cause of this effect has been featured in Scientific American magazine, with several theories given to explain the phenomenon but no definite conclusion. As a second meaning, the fact that nearby phase front distortions of an optical wave are more severe than remote distortions of the same amplitude is called shower curtain effect.

In physics, the shower curtain effect is the phenomenon in which a shower curtain gets blown inward with a running shower. The problem of the cause of this effect has been featured in Scientific American magazine, with several theories given to explain the phenomenon but no definite conclusion. As a second meaning, the fact that nearby phase front distortions of an optical wave are more severe than remote distortions of the same amplitude is called shower curtain effect.

DOWNLOAD FONTS AND SOURCES

Designed by:
 Jérémy Lardès
Collections:
 Condensed
 Slant Serif
 Custom
 Quakelet
 Tuller made
Writing systems:
 Latin
License:
 SIL Open Font License, Version 1.1
Source:
 Download, modify and Fork
Publication:
 10 September 2008

To reuse their brand image, the French design agency Murmure has decided to take their remodeling on a custom-designed typeface: Le Murmure ("The Murmur" in French). Studio 3000 designer Jérémy Lardès has developed an especially distinctive, editorial and elegant font, which has been complemented by typography Kévin's variations.

Jérémy has had an attentive ear to create a typeface in line with Murmure's image. Le Murmure font plays on a skillful interplay between characters, creating a unique rhythm which carries our voice. The fruitful and exciting collaboration strengthens Murmure's graphic and collaborative vision to undertake singular and sensitive projects.

Used as a titling font, its height and the elasticity of its shapes lend it elegance, whilst details inspired by calligraphy and technique reveal all of Murmure's notions of experimentation, research and creativity. Le Murmure is a typeface devoid of earth which combines effectiveness, legibility and singularity. Its highly contrasted proportions draw their inspiration from magazine titling fonts and add the editorial dimension the agency wanted to endow their new identity with.

This typeface comes with many glyph variations, meaning alternate letters drawn in an ever more original way. Here lies infinite potential which the users will take great delight in exploiting through a custom desktop function.

TEXT SIZE

LET'S CHAT

[By email](#)
[In our newsletter](#)
[In GitHub](#)
[In Twitter](#)
[In Facebook](#)
[In Instagram](#)

DONATE

Do you love our typefaces? Do you want to help us continue the adventure and release new typefaces? Pay us coffee and donate.



[Click here more about donations](#)

LAST IN USE

Alva Kink Red
 Lazarus Drul

PARISINE



104

104

104

104

LE
104
CENT
QUATRE

LE
104
CENT
QUATRE

LE
104
CENT
QUATRE

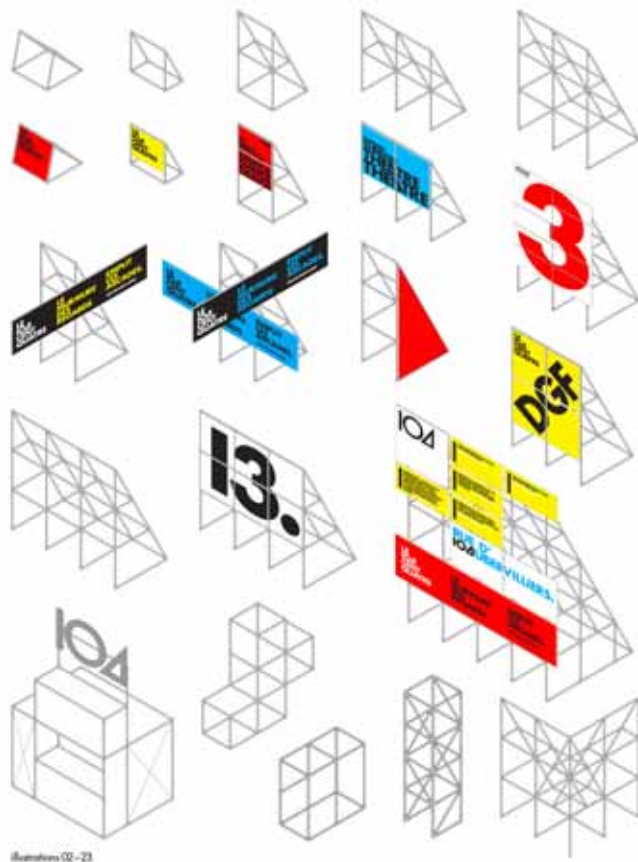
LE
104
CENT
QUATRE

LE
104
CENT
QUATRE
ÉTABLISSEMENT ARTISTIQUE
DE LA VILLE DE PARIS

LE
104
CENT
QUATRE
ÉTABLISSEMENT ARTISTIQUE
DE LA VILLE DE PARIS

LE
104
CENT
QUATRE
ÉTABLISSEMENT ARTISTIQUE
DE LA VILLE DE PARIS

LE
104
CENT
QUATRE
ÉTABLISSEMENT ARTISTIQUE
DE LA VILLE DE PARIS



Illustrations 02-23

All possible colour combinations



Agrégation Arts Appliqués, session 2019.
Image et Communication
sujet n°2

Documents :

2.1

Dans la lune,

éditions du livre, 2013

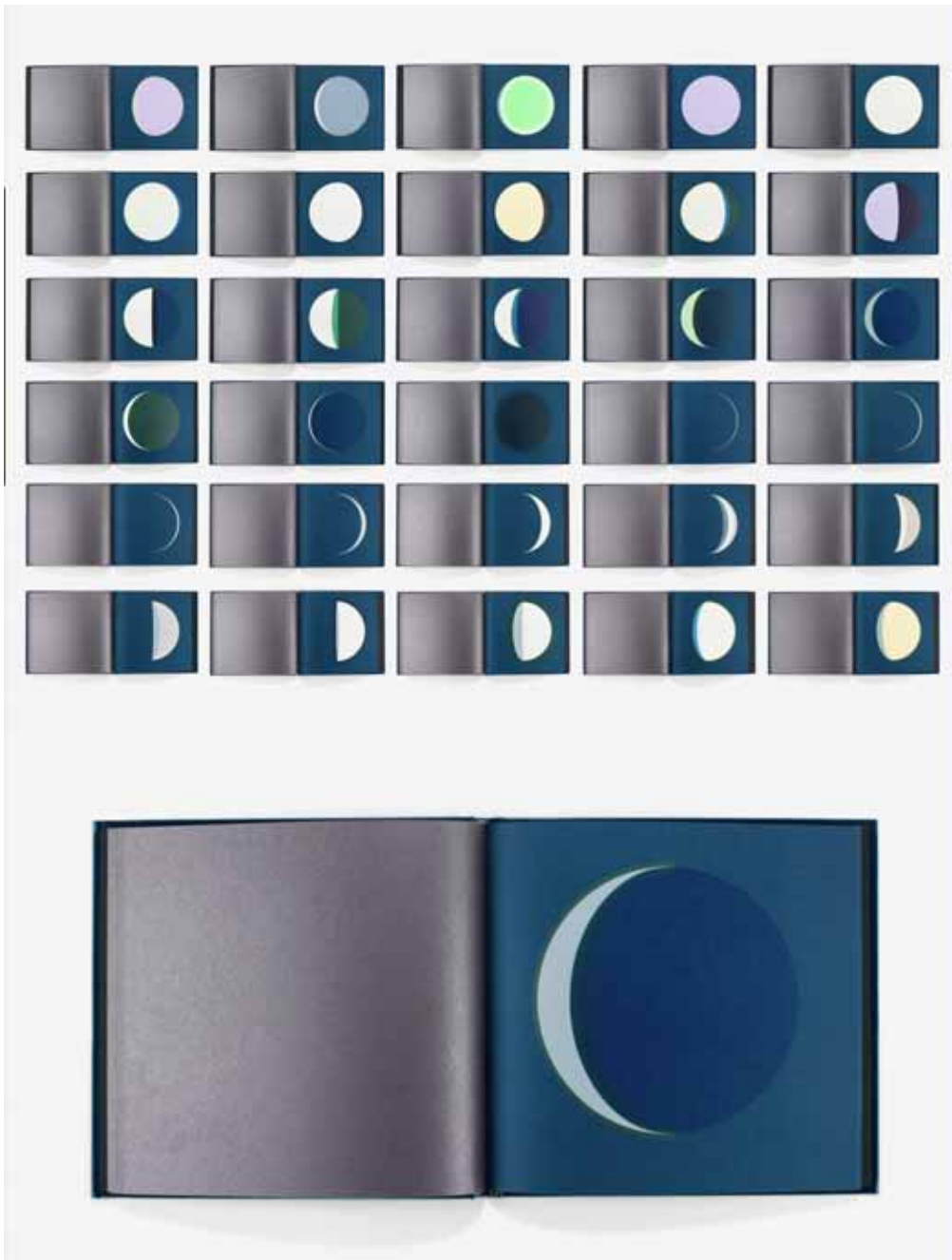
Graphiste : Fanette Mellier

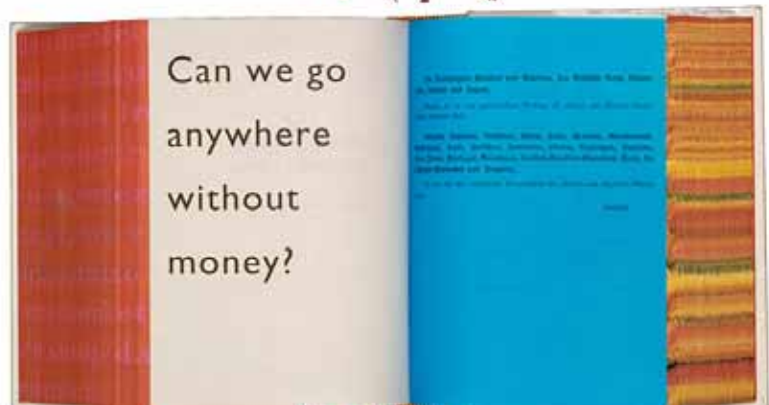
2.2

SHV Think Book

1986-1996, Centennial Album

Graphiste : Irma Boom





Documents :

4.1

Carte figurative des pertes successives en hommes de l'armée française dans la campagne de Russie 1812-13

Charles Minard, 1869

4.2

Carte du crime de Chicago

Adrian Holovaty, 2005W

4.3

You draw it : what got better or worst during Obama's presidency

Larry Buchanan, Haeyoun Park, Adam Pearce, 2015

Proposition de traduction : « Dessinez-le : ce qui s'est amélioré ou détérioré pendant la présidence Obama »

Article interactif hébergé sur le site du New York Times. Le site invite l'utilisateur à dessiner ses estimations puis à les comparer avec les chiffres officiels.

Carte Figurative des pertes successives en hommes de l'Armée Française dans la Campagne de Russie 1812-1813.

Revue par M. Minard, Inspecteur Général des Ponts et Chaussées en retraite. Paris, le 20 Novembre 1869.

Les nombres 3 hommes présents sont représentés par les haquets des fûts colorés à raison d'un millimètre pour dix mille hommes, ils sont de plus écrits en lettres des fûts. Le rouge désigne les hommes qui ont péri en Russie, le noir ceux qui en sont revenus. Les renseignements qui ont servi à tracer la carte ont été puisés dans les ouvrages de M. M. Thiers, Chateaubriand, de Séverin, de Chambray et le journal inédit de Sacy, pharmacien de l'Armée, depuis le 23 Octobre. Une erreur faite jadis à l'égard de la diminution de l'armée, j'ai supposé que les corps du Grand Duc et du Maréchal Davoust qui avaient été détachés sur Minsk et Mielnik n'en étaient pas sortis, ainsi qu'on le suppose avec l'armée.

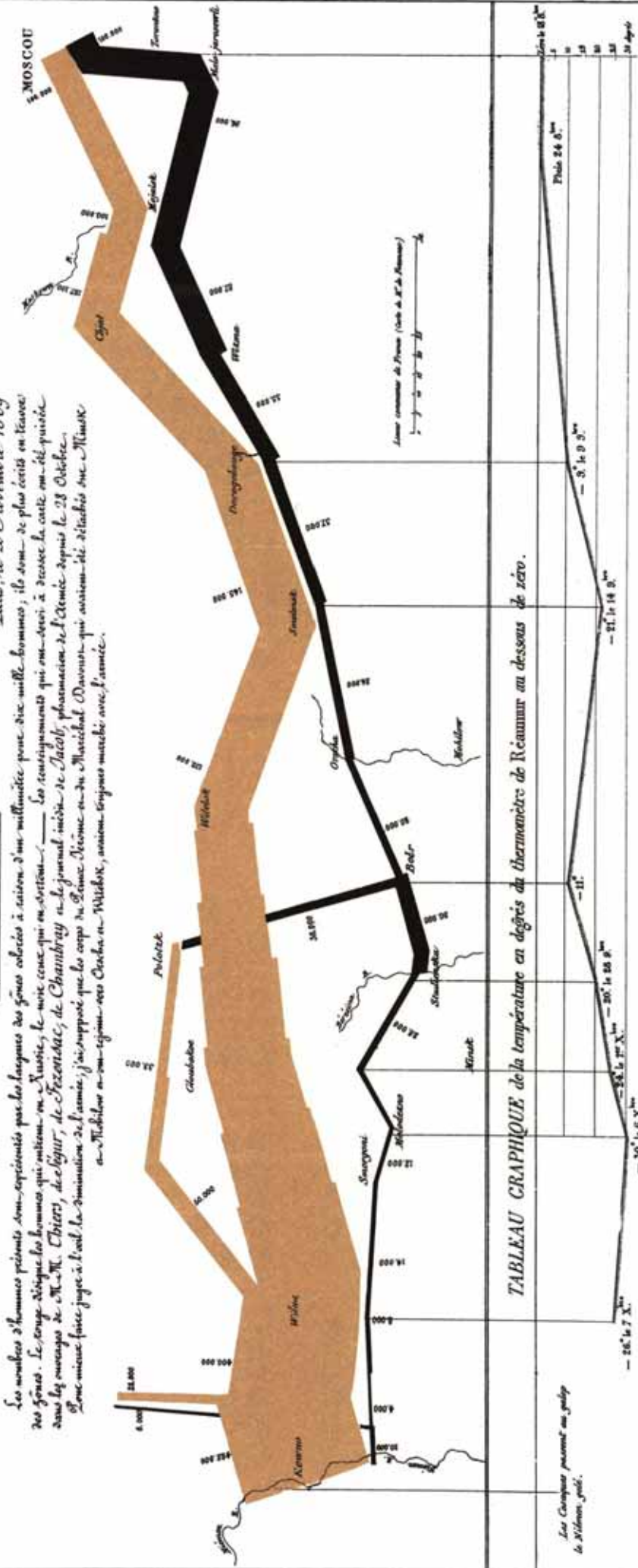


TABLEAU GRAPHIQUE de la température en degrés du thermomètre de Réaumur au dessous de zéro.



Les Corps qui sont restés en Russie de Minsk, etc.

Les Corps qui sont restés en France de Minsk, etc.

Paris, chez Agache, à Paris, 179, Rue de la Harpe, 17, 1794-1795.

Agache, par Agache, à Paris, 179, Rue de la Harpe, 17, 1794-1795.

Browse by: [Crime type](#) · [Street](#) · [Date](#) · [Police district](#) · [ZIP code](#) · [Ward](#) · [Location](#) · [Route](#) · [City map](#) Search:

Crimes by location / Barbershop

Latest reported crimes

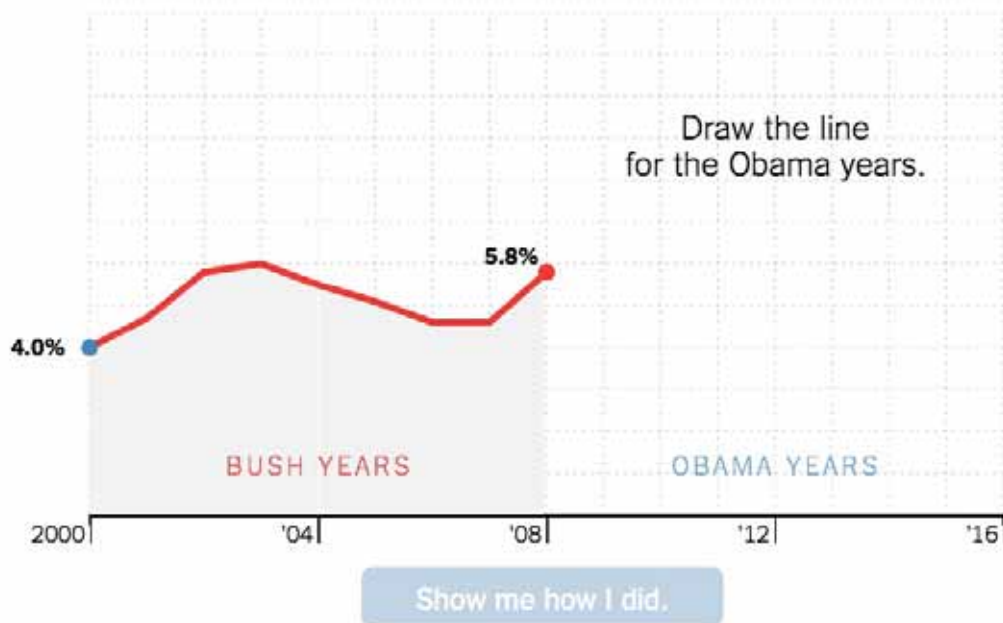
- **MARCH 14** [Battery](#)
7:06 p.m. 4000 block W. Division St.
- **MARCH 14** [Harassment by telephone](#)
8:45 a.m. 3800 block W. Montrose Ave.
- **MARCH 12** [Criminal damage](#)
5 p.m. 9300 block S. Western Ave.
- **MARCH 11** [Robbery](#)
7:45 p.m. 8000 block S. Halsted St.
- **MARCH 10** [Battery](#)
7:02 p.m. 3200 block W. Armitage Ave.
- **MARCH 10** [Theft](#)
7 p.m. 1500 block W. 87th St.
- **MARCH 10** [Criminal damage](#)
8:50 a.m. 5100 block S. Archer Ave.
- **MARCH 9** [Criminal damage](#)
1:15 a.m. 3400 block N. Clark St.
- **MARCH 6** [Non-criminal](#)
10 a.m. 7900 block S. Clyde Ave.
- **MARCH 4** [Criminal damage](#)
7 p.m. 2900 block S. Homan Ave.
- **MARCH 4** [Burglary](#)
6:15 p.m. 7200 block S. Ashland Ave.
- **MARCH 4** [Burglary](#)



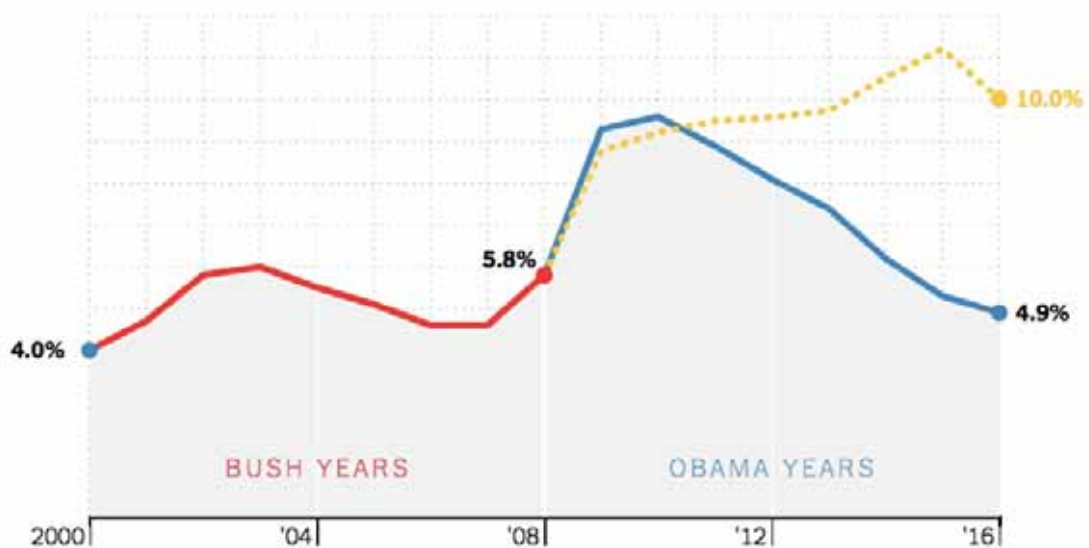
Crime classifications key

- Person · 5 crimes
- Person (domestic) · 1 crime
- Property · 11 crimes
- Property (domestic) · 1 crime

Under President Obama, the **unemployment rate** ...



Under President Obama, the **unemployment rate** ...



... **reached its lowest level since 2007**. The **current rate** is a stunning decline from the 9.3 percent in 2009, the year Mr. Obama took office.