



Who am I ?

François LAGLEIZE

**Professeur Agrégé Building Construction
Engineering**

Btech, Master Construction Engineering

Ecole Normale Supérieure CACHAN

(Faculty of Education)

Who am I ?

I'm working for the french National Education
Ministry

(as my 1 Million colleagues educating young people from 3 yo to the PhD).

I am in mission for one year in the NMU until
august 2018.

The aim of my mission :

Create BIM Club. Yet launched in NMU

Create links between one TVET and « Lycée
Rosa Parks » in La Roche sur Yon in
France

La Roche sur Yon

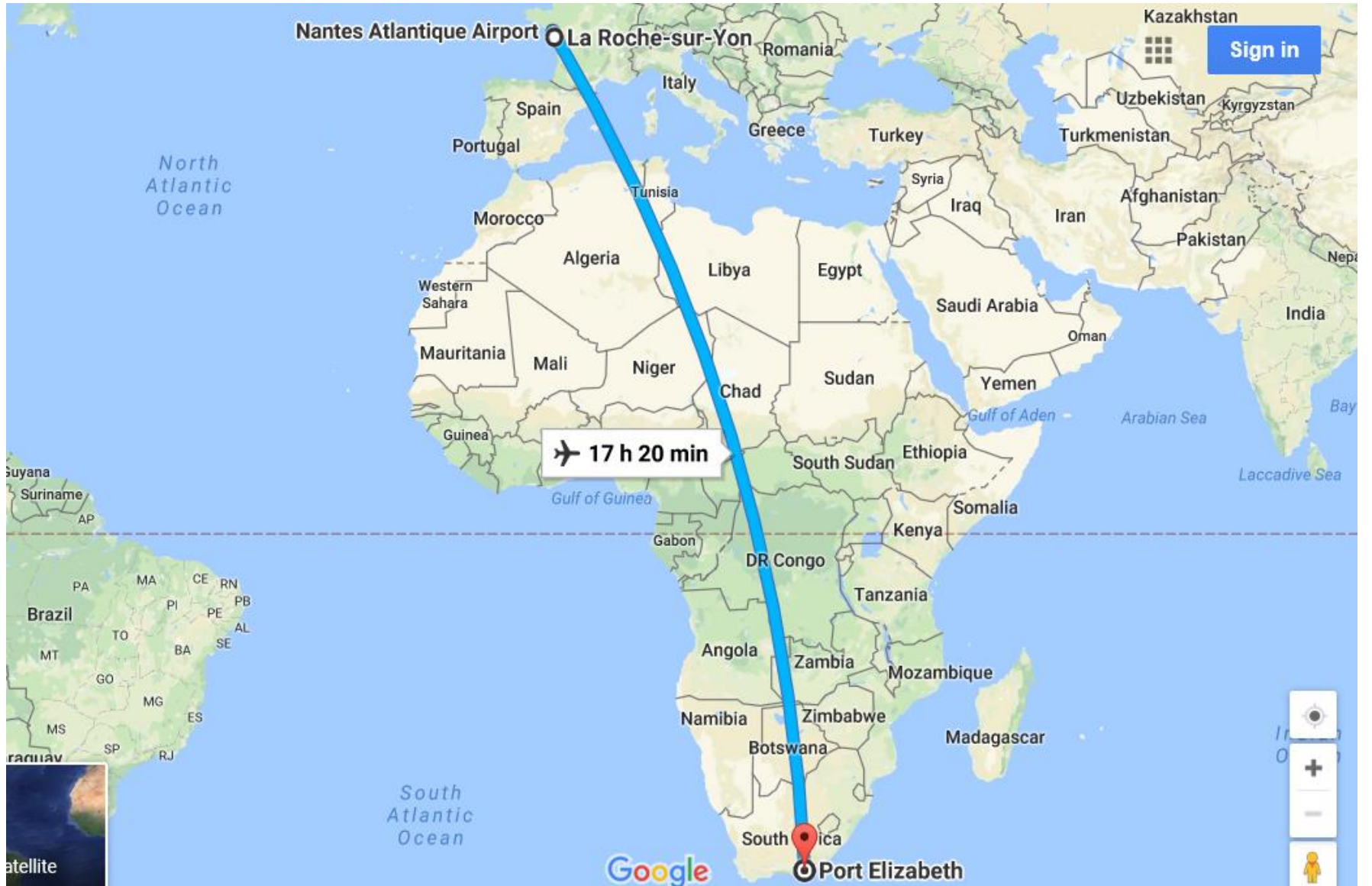


- La Roche sur Yon

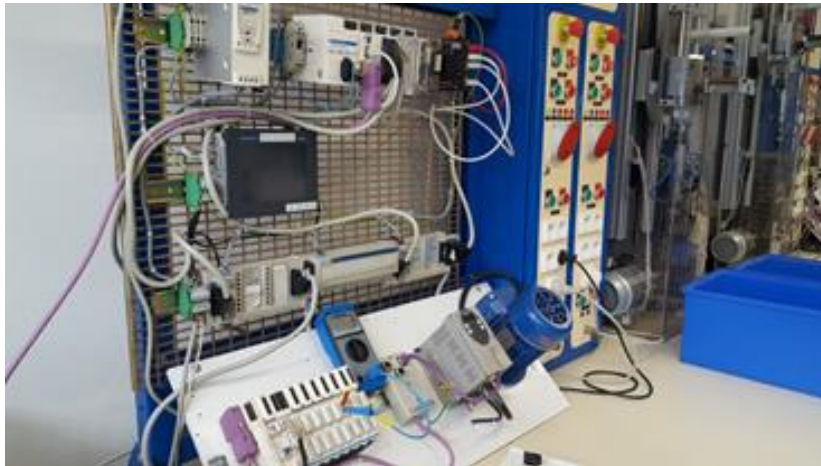


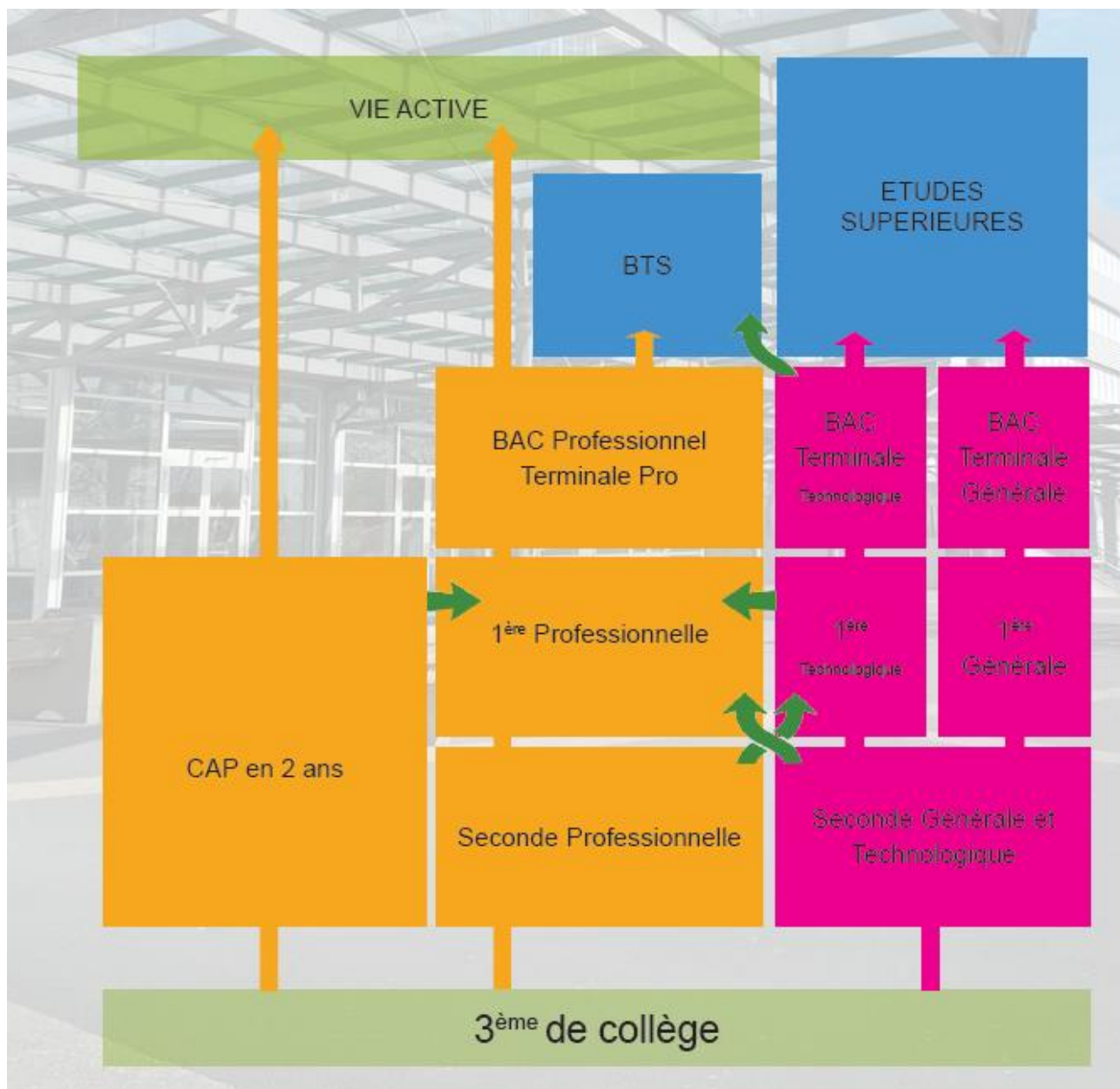
- 30 min to the Atlantic Ocean





LYCEE ROSA PARKS







Brevets de Technicien Supérieur

- **BTS CPRP** (Conception des Processus de Réalisations de Produits)
- **BTS CRSA** (Construction et Réalisation de Systèmes Automatiques)
- **BTS ERA** (Études et Réalisation d'Agencement)
- **BTS EEC** (Études et Économie de la Construction)
- **BTS FED** (Fluides, Énergies, Domotique)
option A : Génie climatique et froid
 - **BTS Bâtiment Gros Oeuvre**

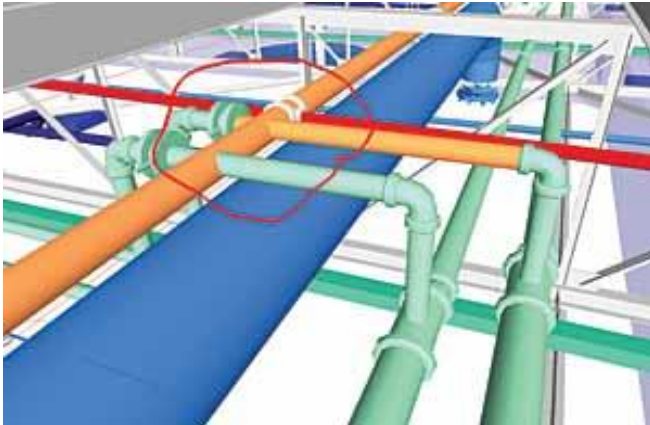
Licences Professionnelles

- **Licence Professionnelle Bâtiment et Construction**
- **Licence Professionnelle Robotique**

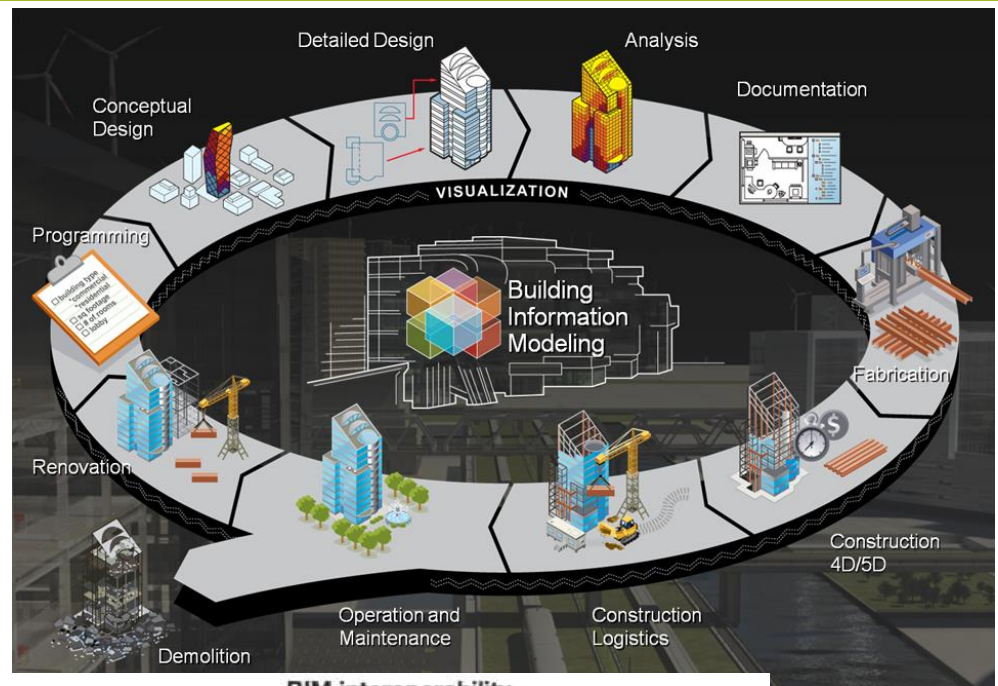
BIM ? What is that ?

Building Information Modeling (BIM) is a digital representation of physical and functional characteristics of a facility. A **BIM** is a shared knowledge resource for information about a facility forming a reliable basis for decisions during its life-cycle; **defined** as existing from earliest conception to demolition.

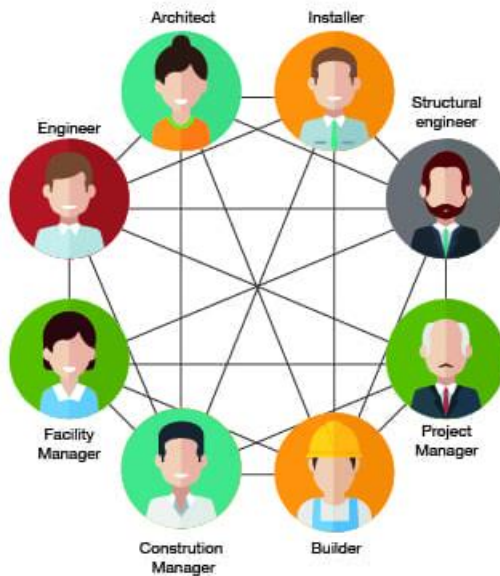
FIRST STEP : What is the BIM ?



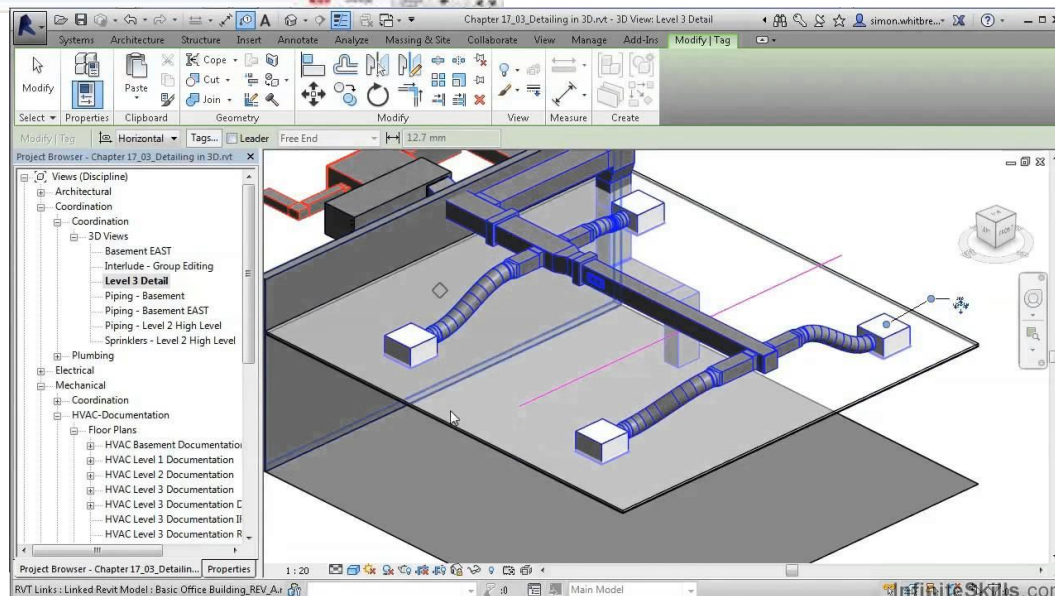
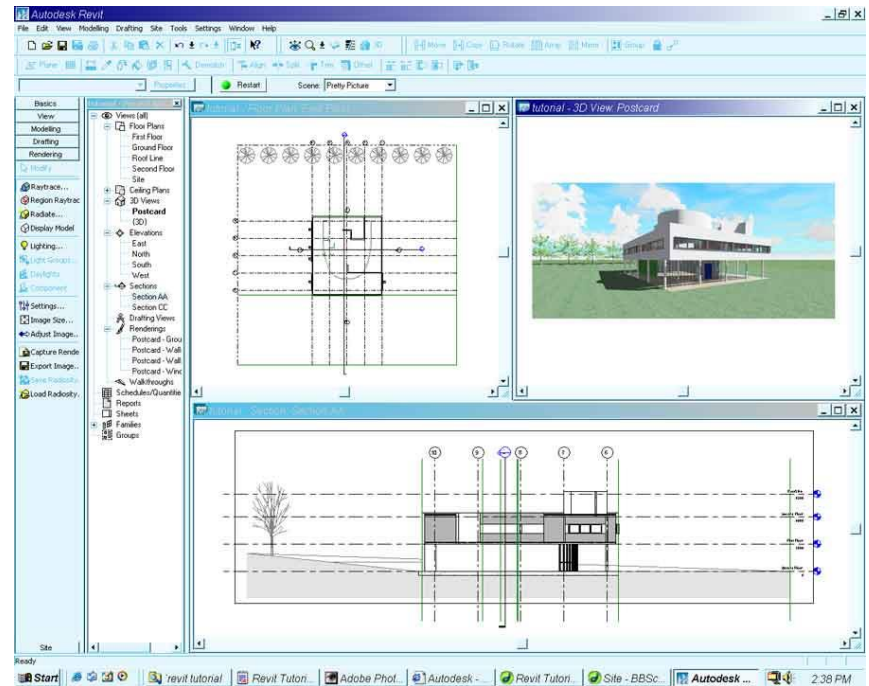
2D data exchange



BIM interoperability



SECOND STEP : HOW TO DESIGN THE MODEL ?



BIM SOCIETY – BUILDING INFORMATION MODELLING



New Engineering Building

BIM Society open to students and staff involved in Building, MEP, Architecture

Contact: François LAGLEIZE
Francois.Lagleize@mandela.ac.za

Tel: 041 504 3978



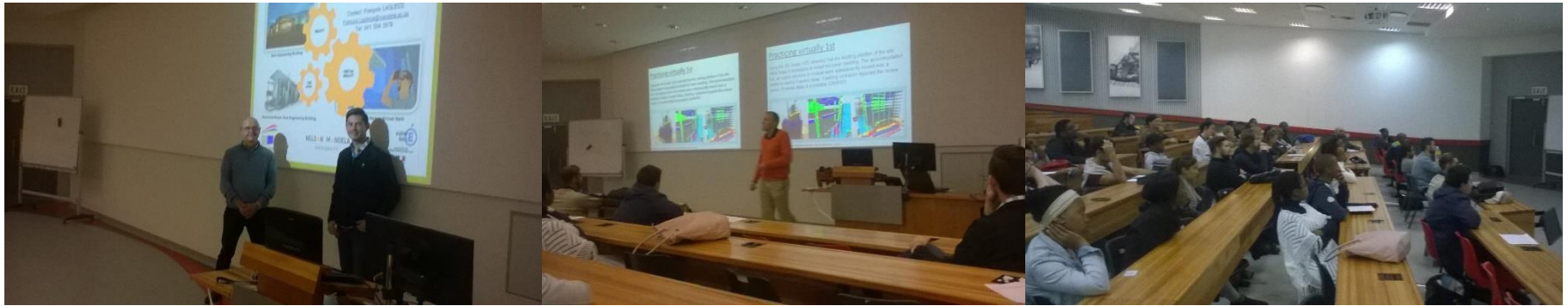
Numerical Model: New Engineering Building



Have a Virtual Walk



Launch of the BIM Club in the NMU



More about BIM



So, why am I here talking with you ?

Create links with the « Lycee Rosa Parks »

To start, to initiate I can create a BIM club,
and work in a collaborative way with
students of The TVET College french
students and The NMU.

TERMS AND CONDITIONS

Introduction to BIM and Revit explained with lecture and tutorial.

**3 hours of support a week
WHEN ?**

I can present the lecture to the concerned staff before.

The softwares are free

[More about BIM ...](#)

PROPOSED ACTIVITIES

Sure you'll have better ideas !!!!

FRENCH CONTEST :

SMART Territories



Article 5 : production attendue

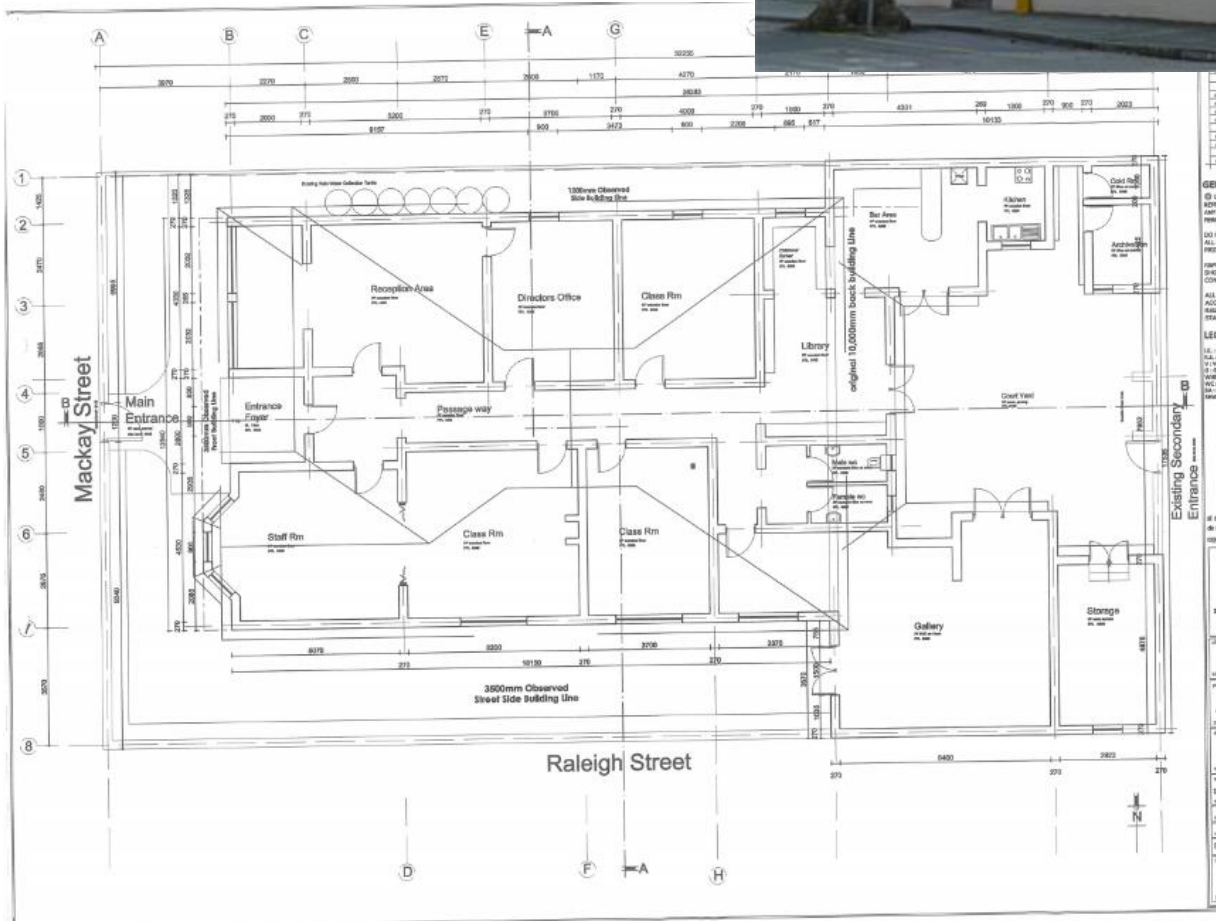
La production attendue par le jury répond aux problématiques posées par **l'évolution d'un territoire intelligent (durable et connecté)** au travers d'une ou plusieurs des composantes suivantes :

- le logement ;
- la mobilité et les déplacements ;
- les activités humaines (culture, industrie, éducation, santé, commerce, agriculture, loisirs...);
- la préservation de l'environnement, y compris la gestion de l'eau et des déchets ;
- les énergies, locales et renouvelables.

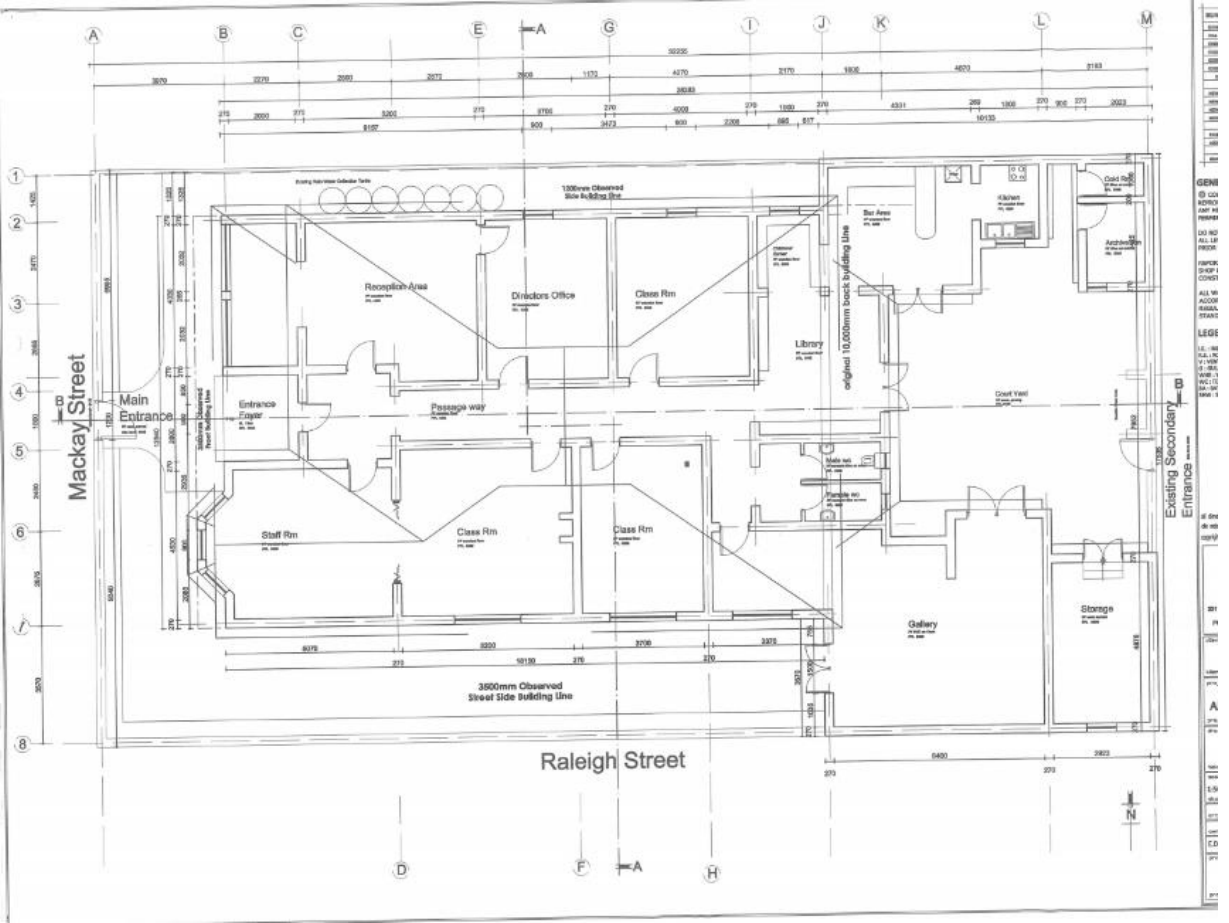
Le jury sera particulièrement attentif aux possibilités de réalisation ainsi qu'aux expérimentations conduites. Il attend une production qui tienne compte des éléments suivants relatifs au territoire durable et connecté :

- les contextes historique et socio-économique ;
- la justification des solutions constructives et des choix des matériaux de construction ;

Create the Model of the PE “Alliance Francaise”



Create the Model of a building of the TVET, from the 2D plans.



ALL THESE ACTIVITIES IN COLLABORATION WITH FRENCH COLLEAGUES Thanks to the BIM

