



DARwIn-OP Education

Extrait Description SysML / UML



Réalisé avec le logiciel MagicDraw



Diagramme des exigences

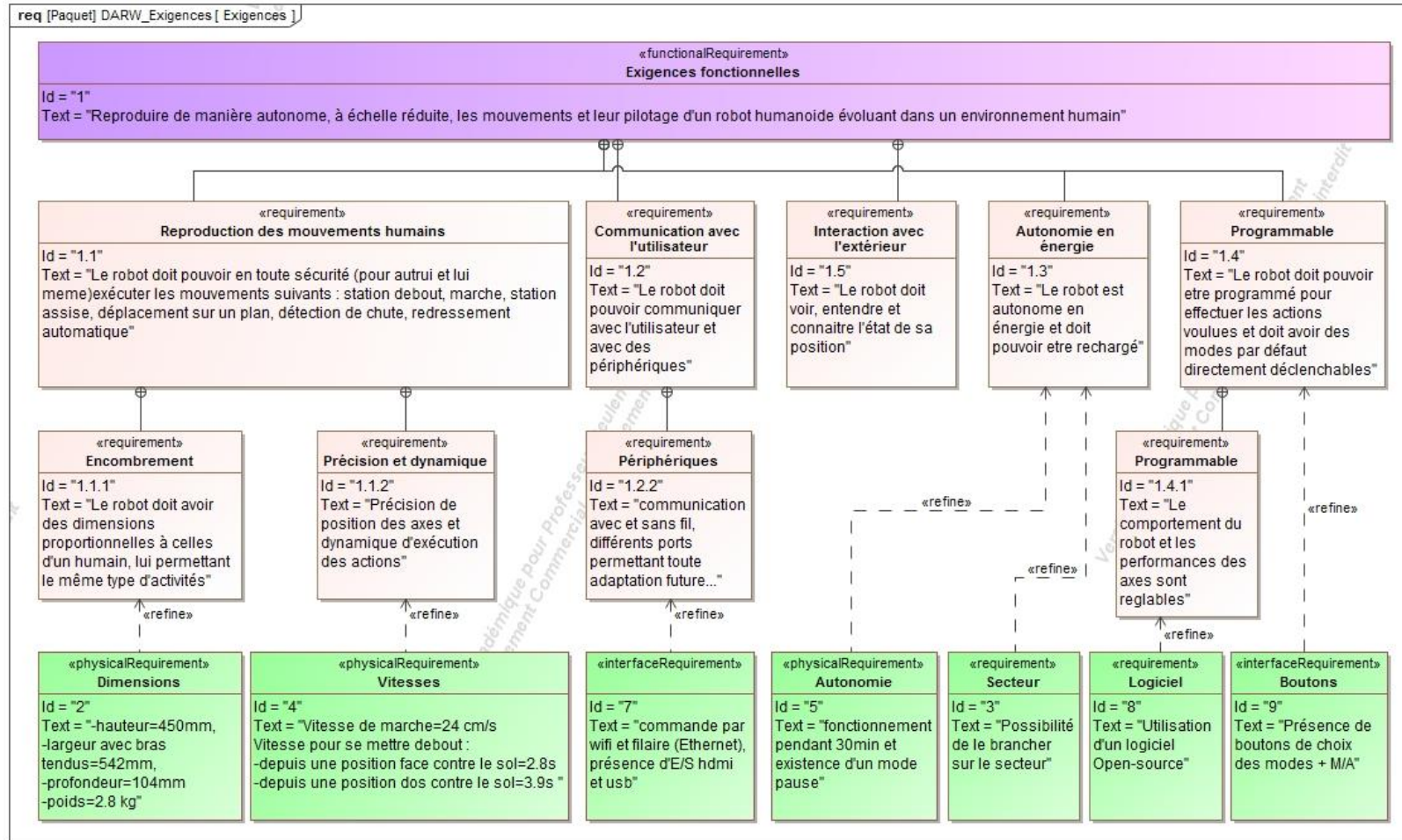




Diagramme de définitions de blocs

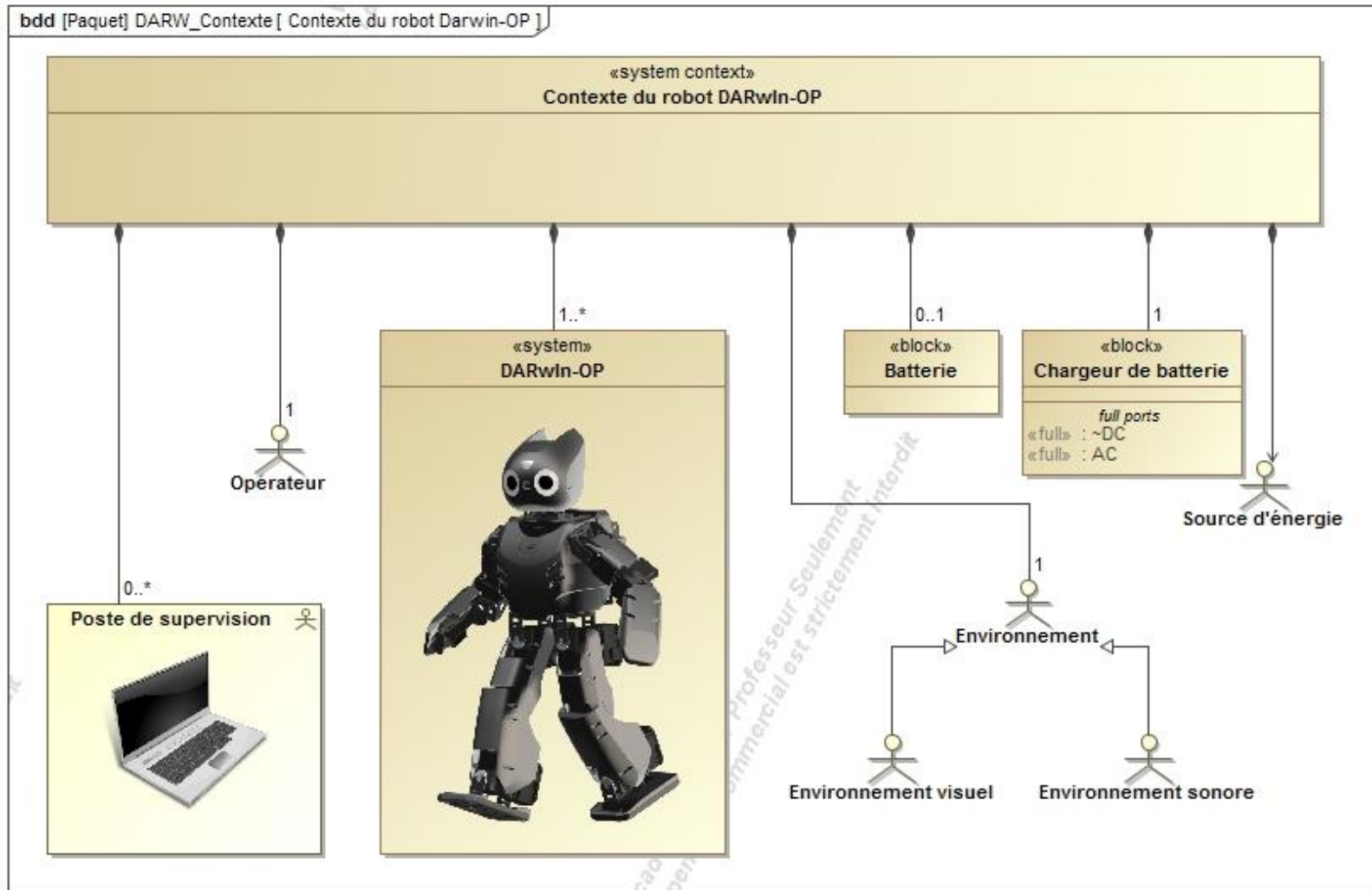




Diagramme de définitions de blocs

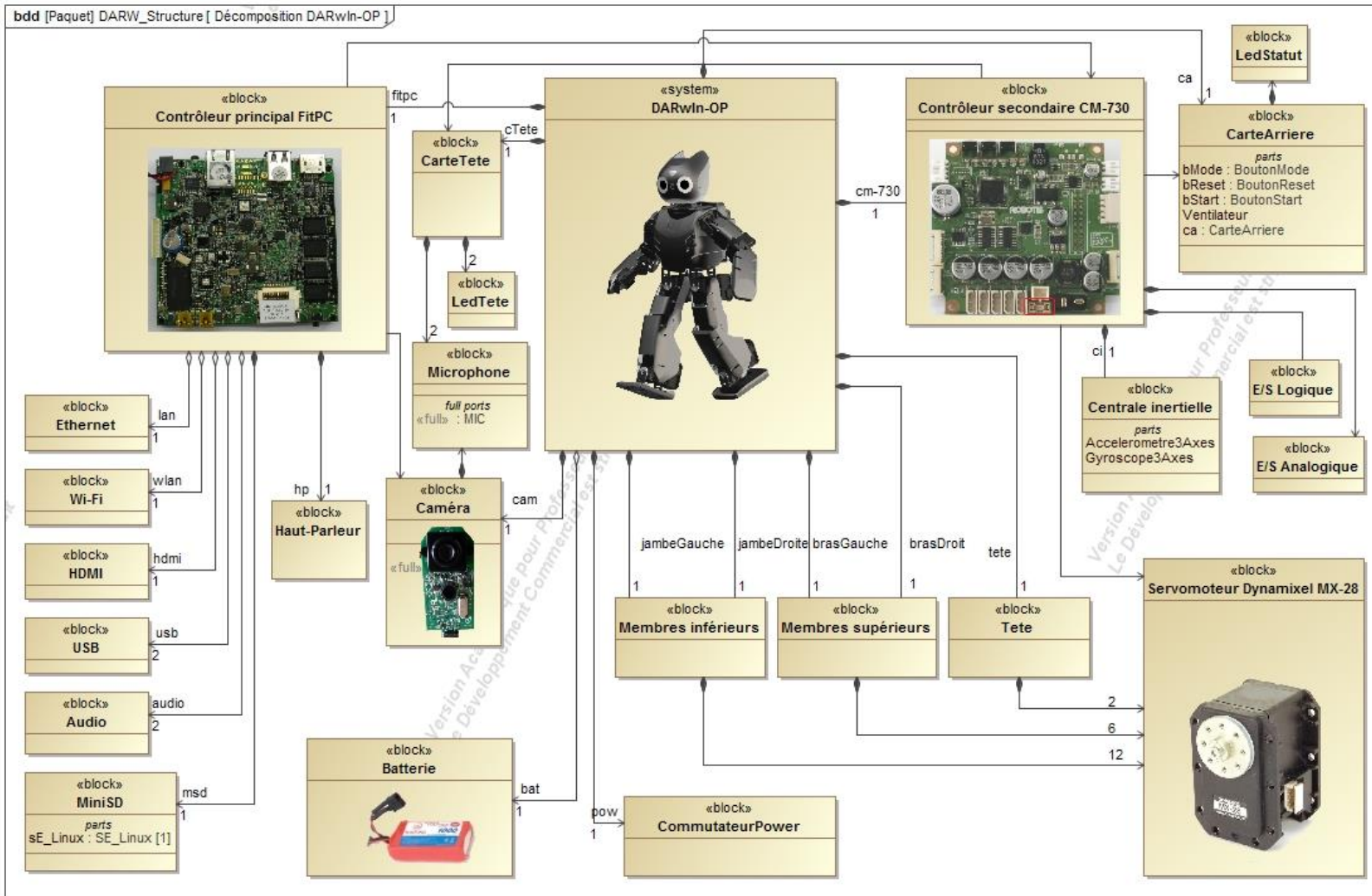




Diagramme de définitions de blocs

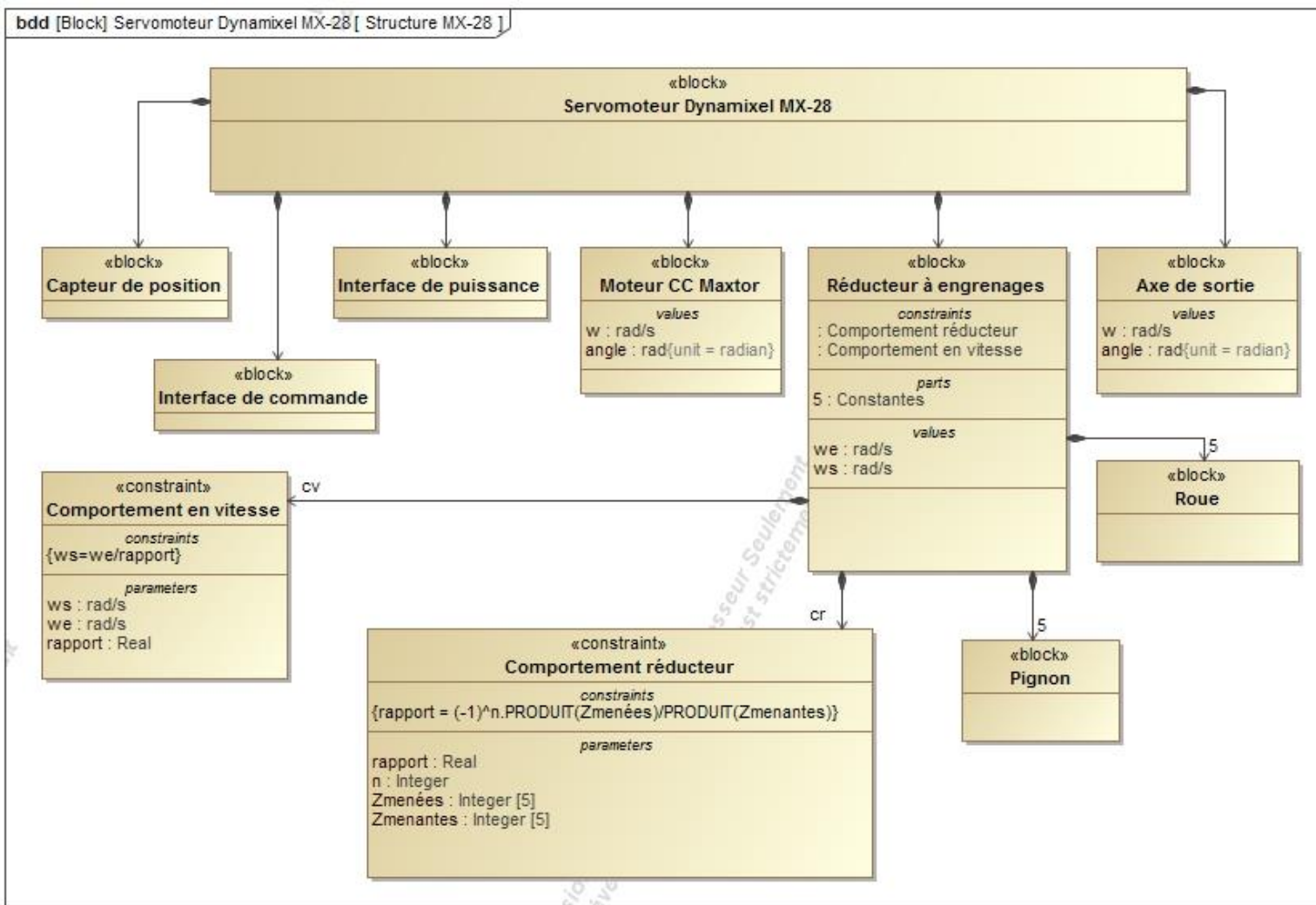
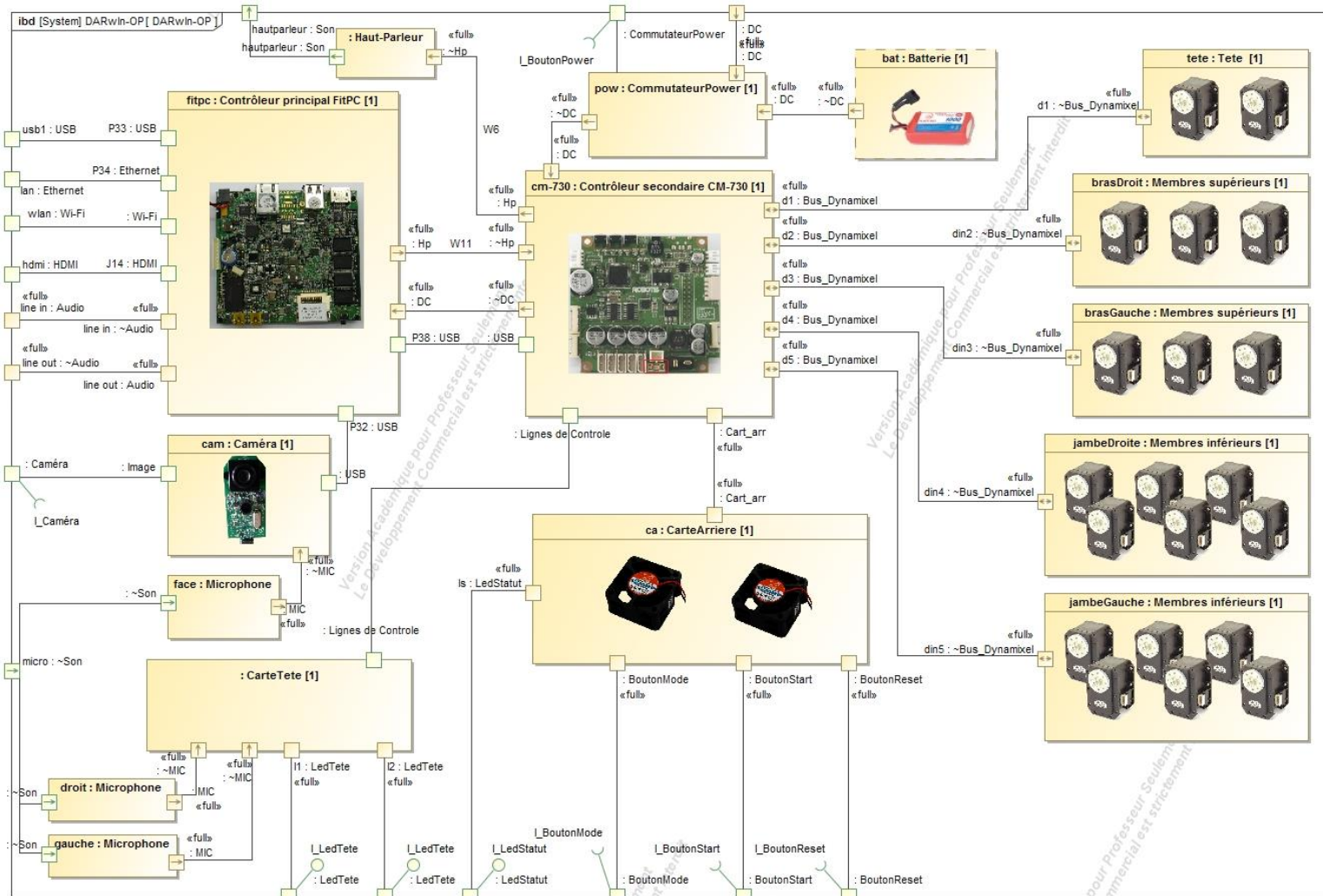




Diagramme de blocs internes



BTS Systèmes Numériques (EC / IR)



Diagramme de blocs internes

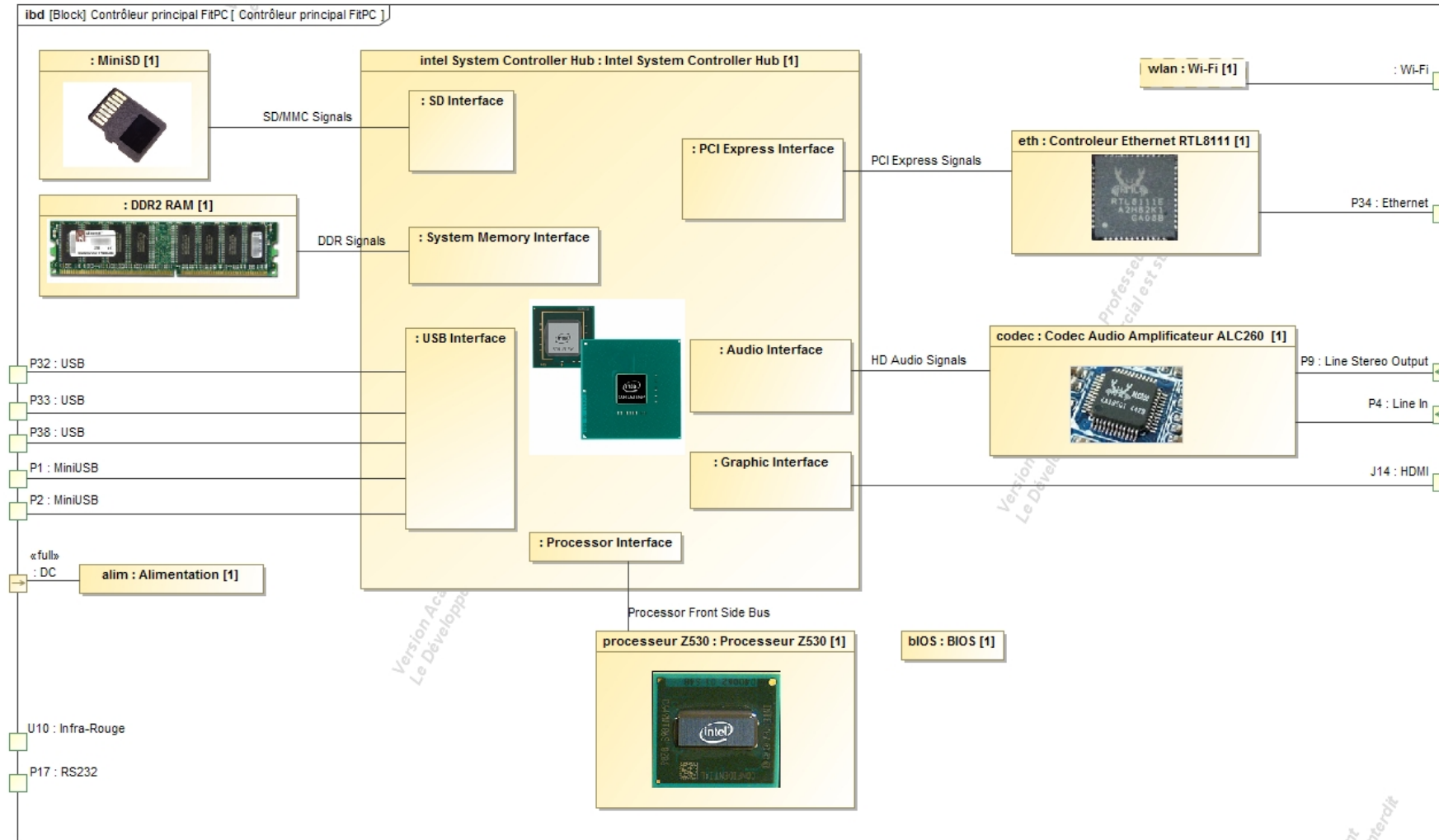




Diagramme Paramétrique

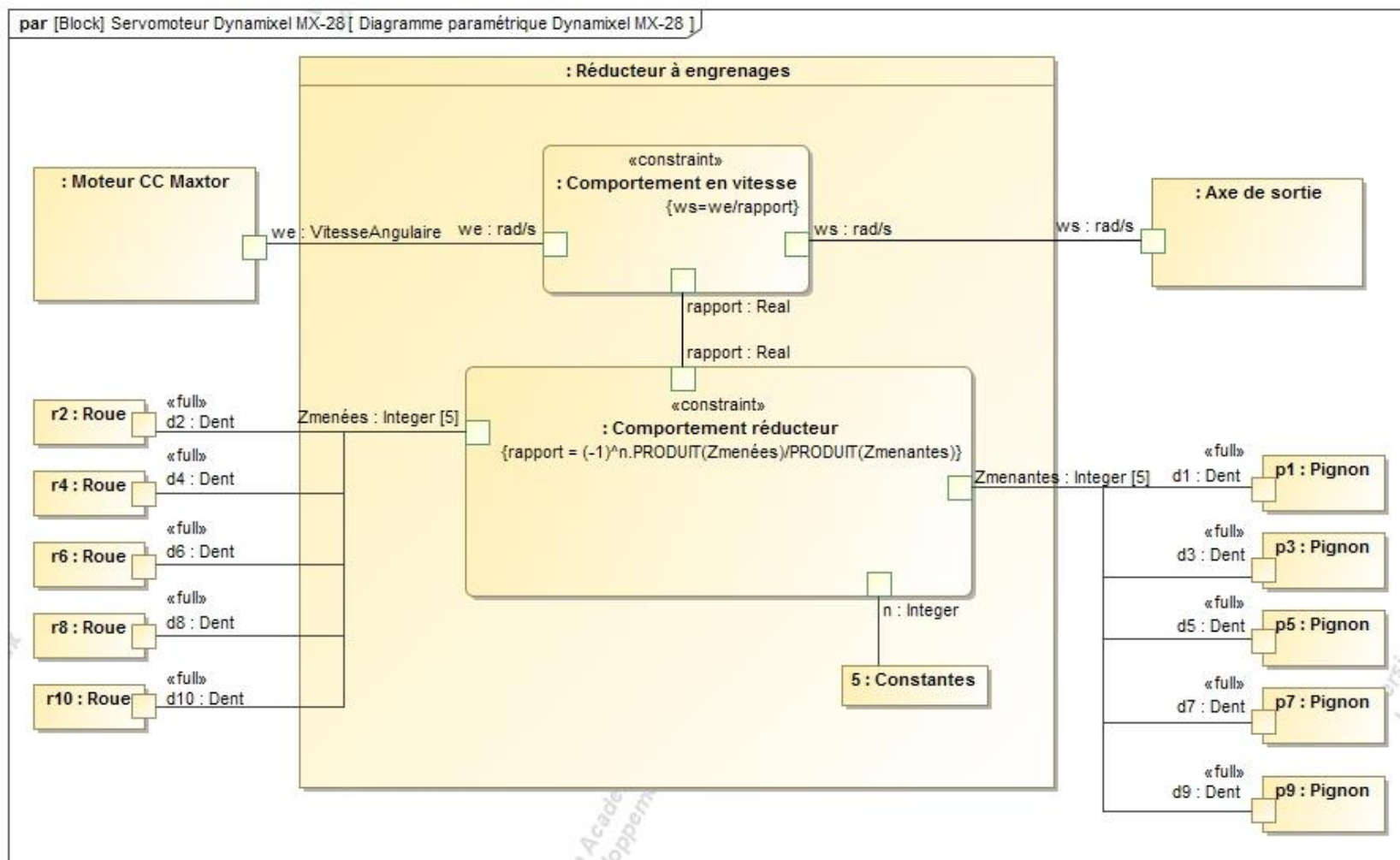




Diagramme des Cas d'Utilisation

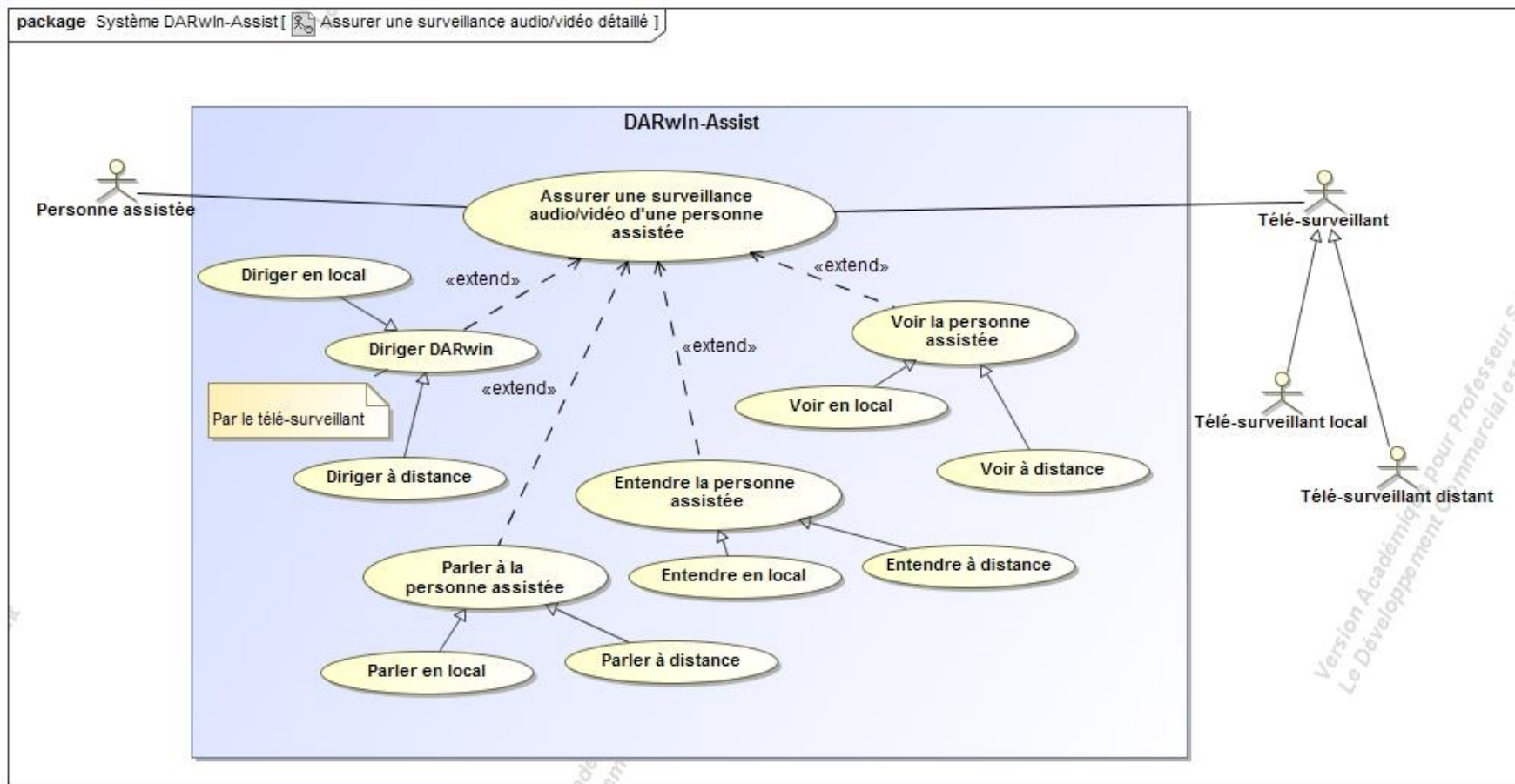
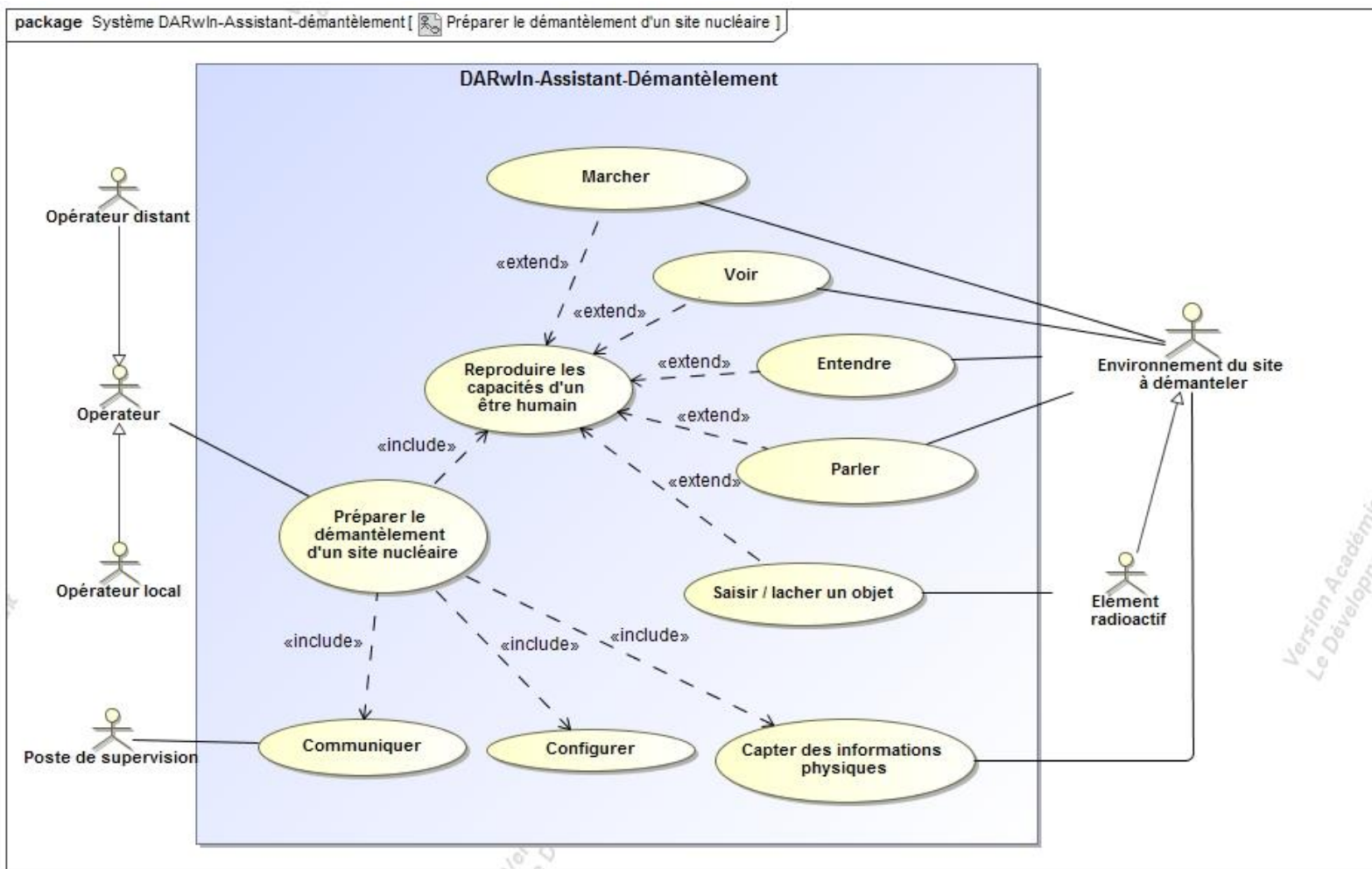




Diagramme des Cas d'Utilisation



Version Académique
Le Développeur



Diagramme des Cas d'Utilisation

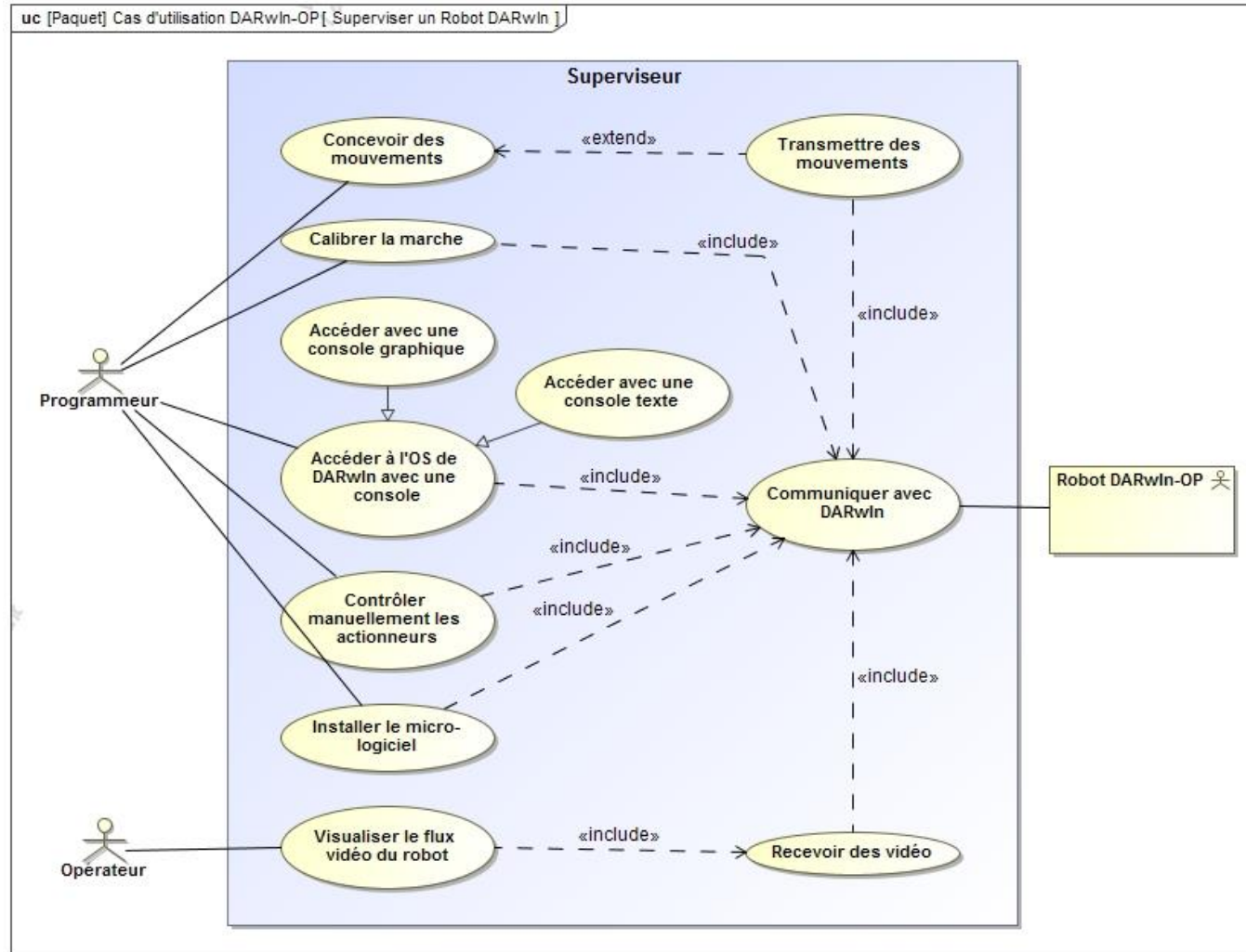




Diagramme d'Activité

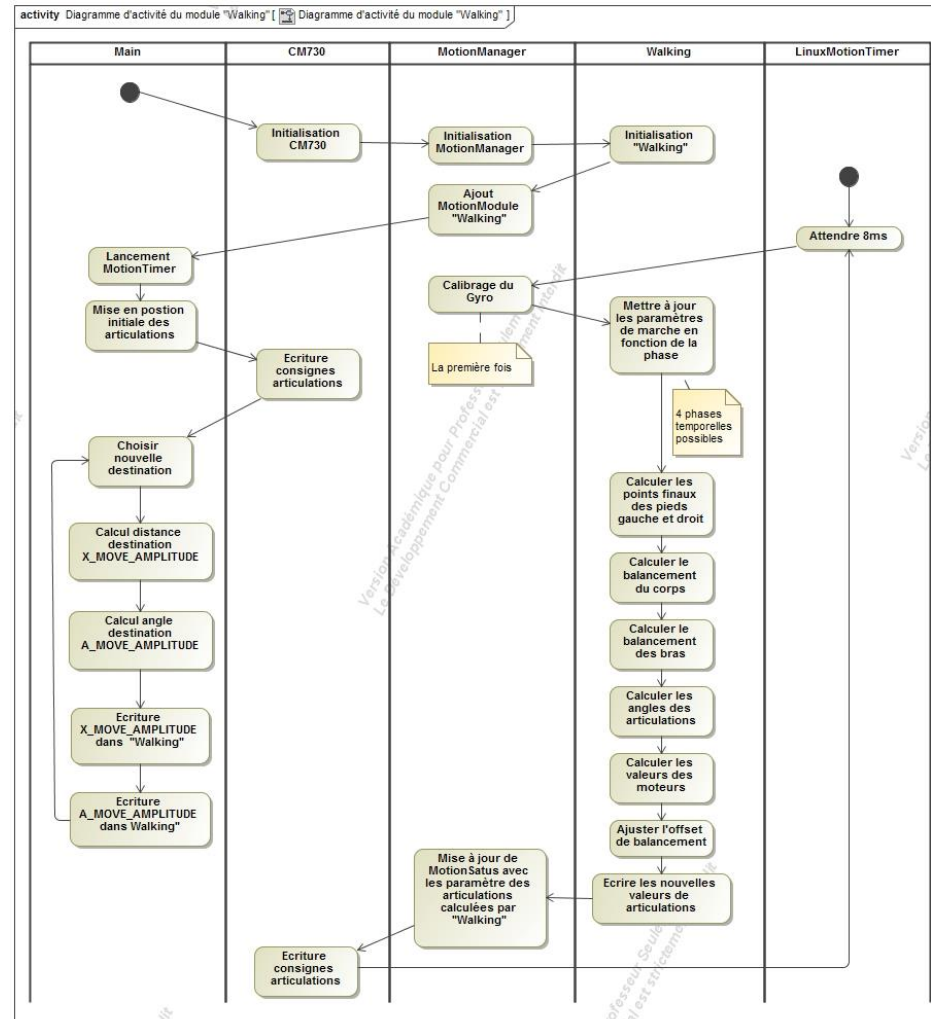




Diagramme d'Etat

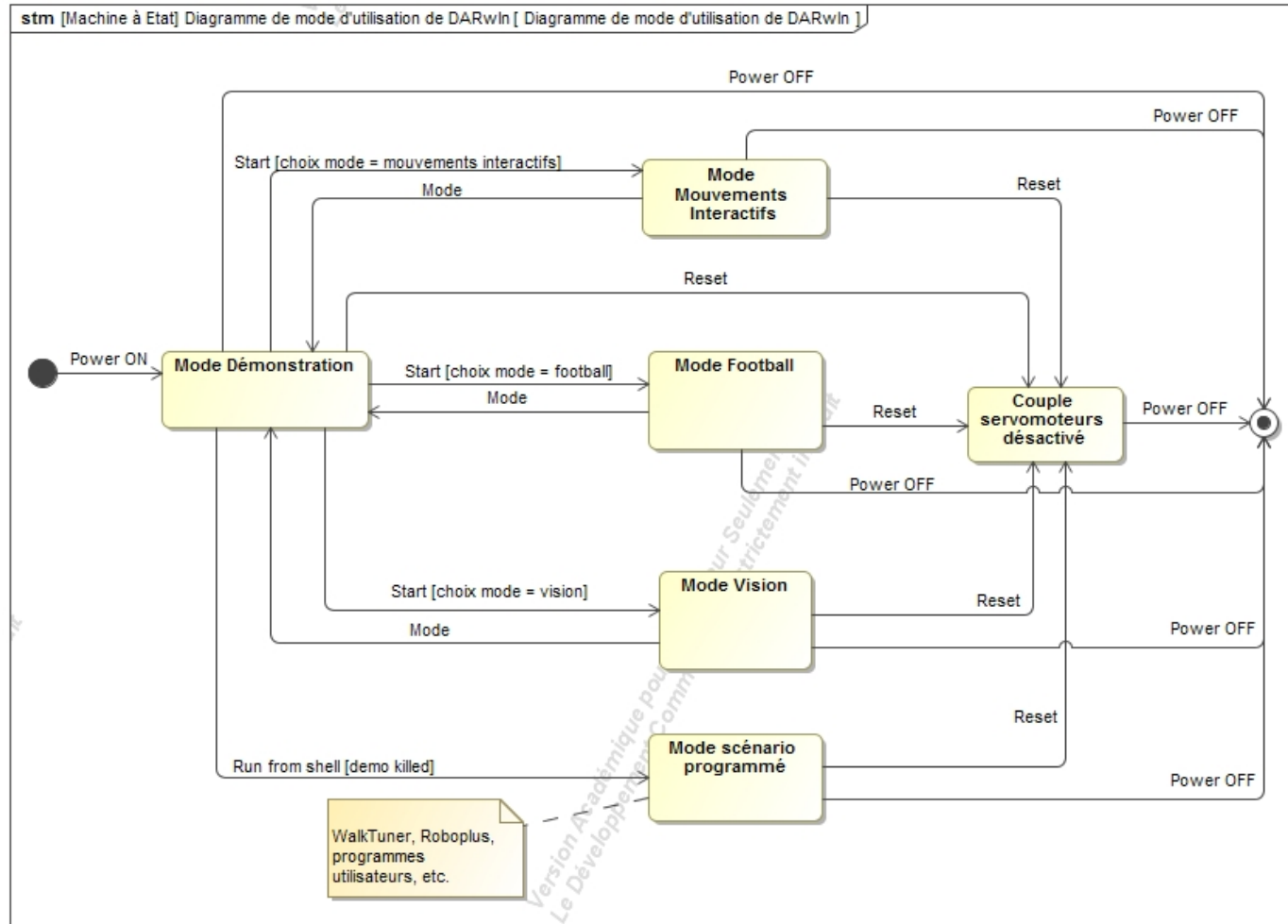




Diagramme d'Etat

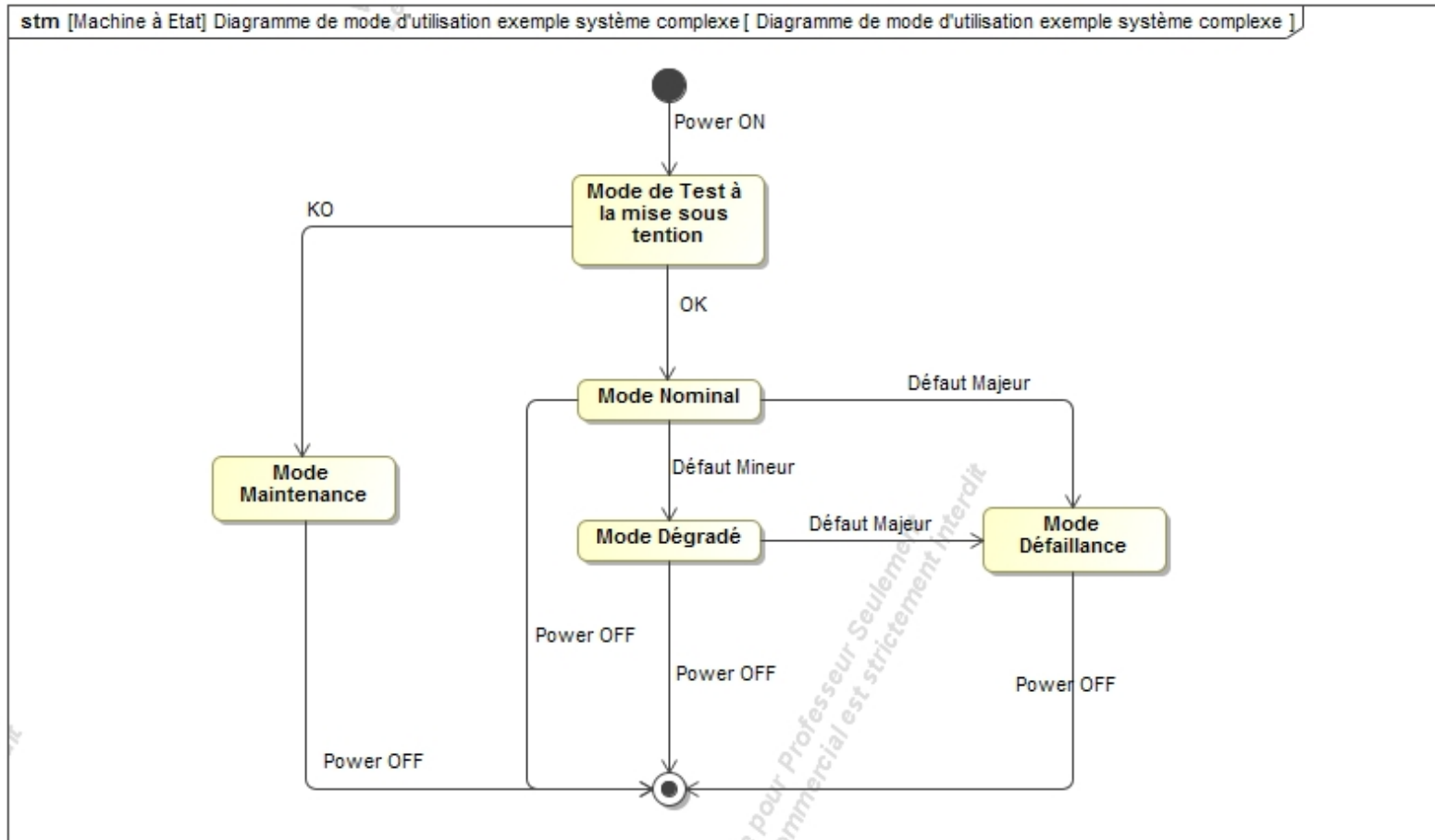




Diagramme de séquence

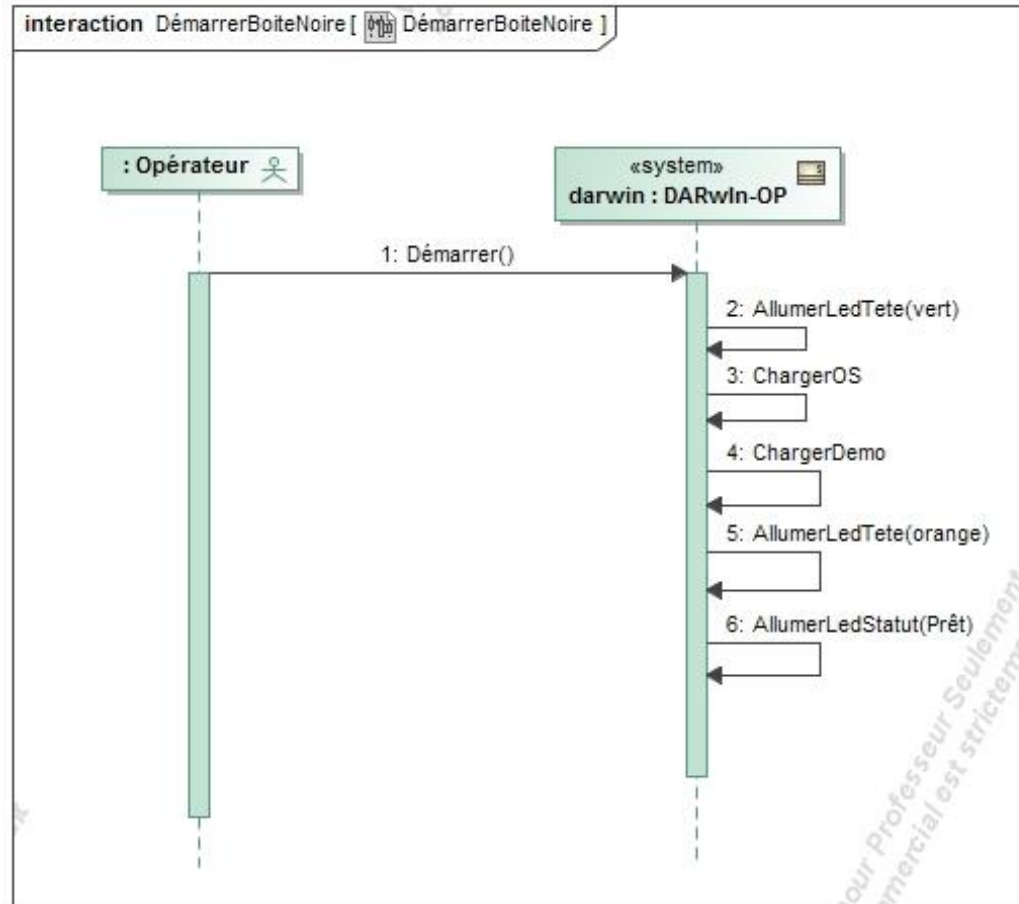




Diagramme de séquence

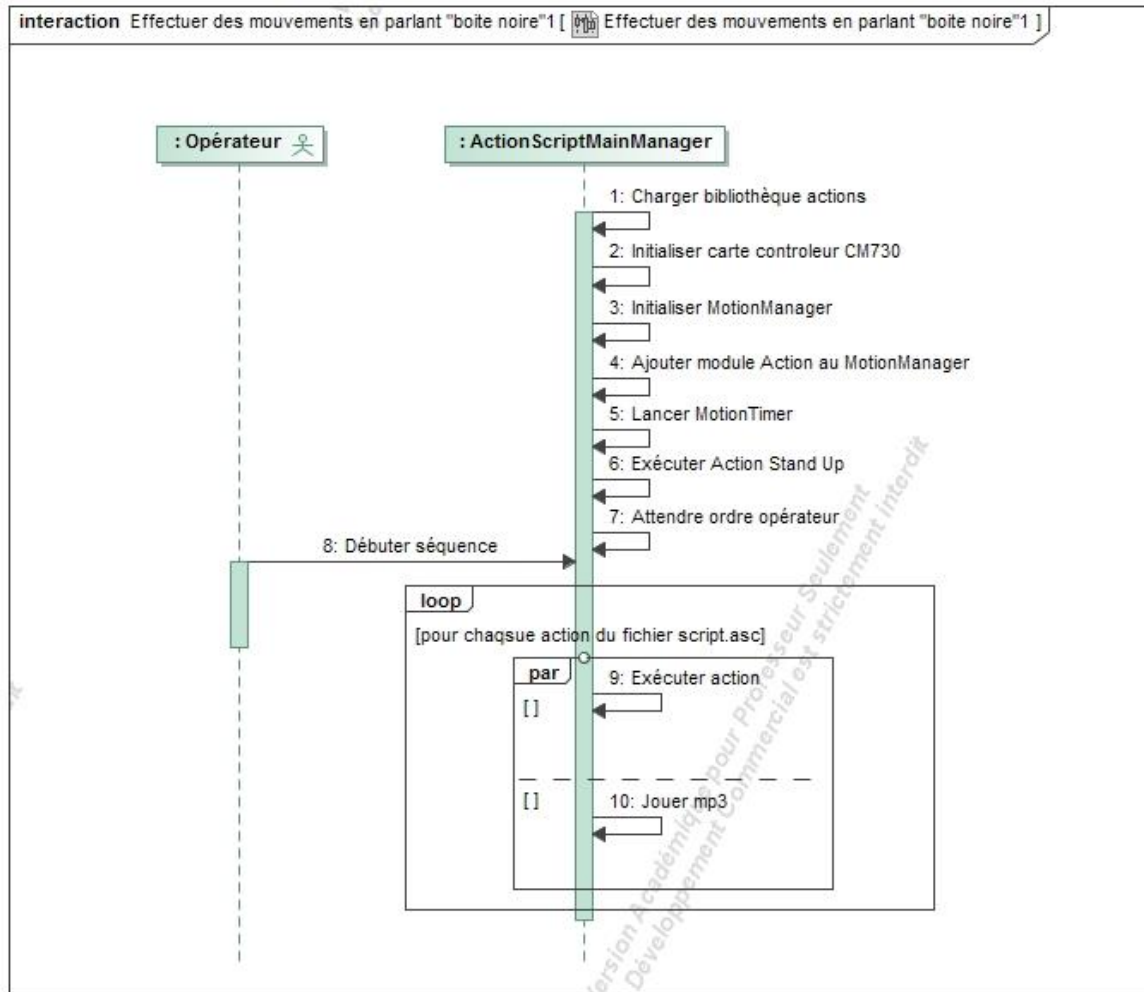




Diagramme de séquence

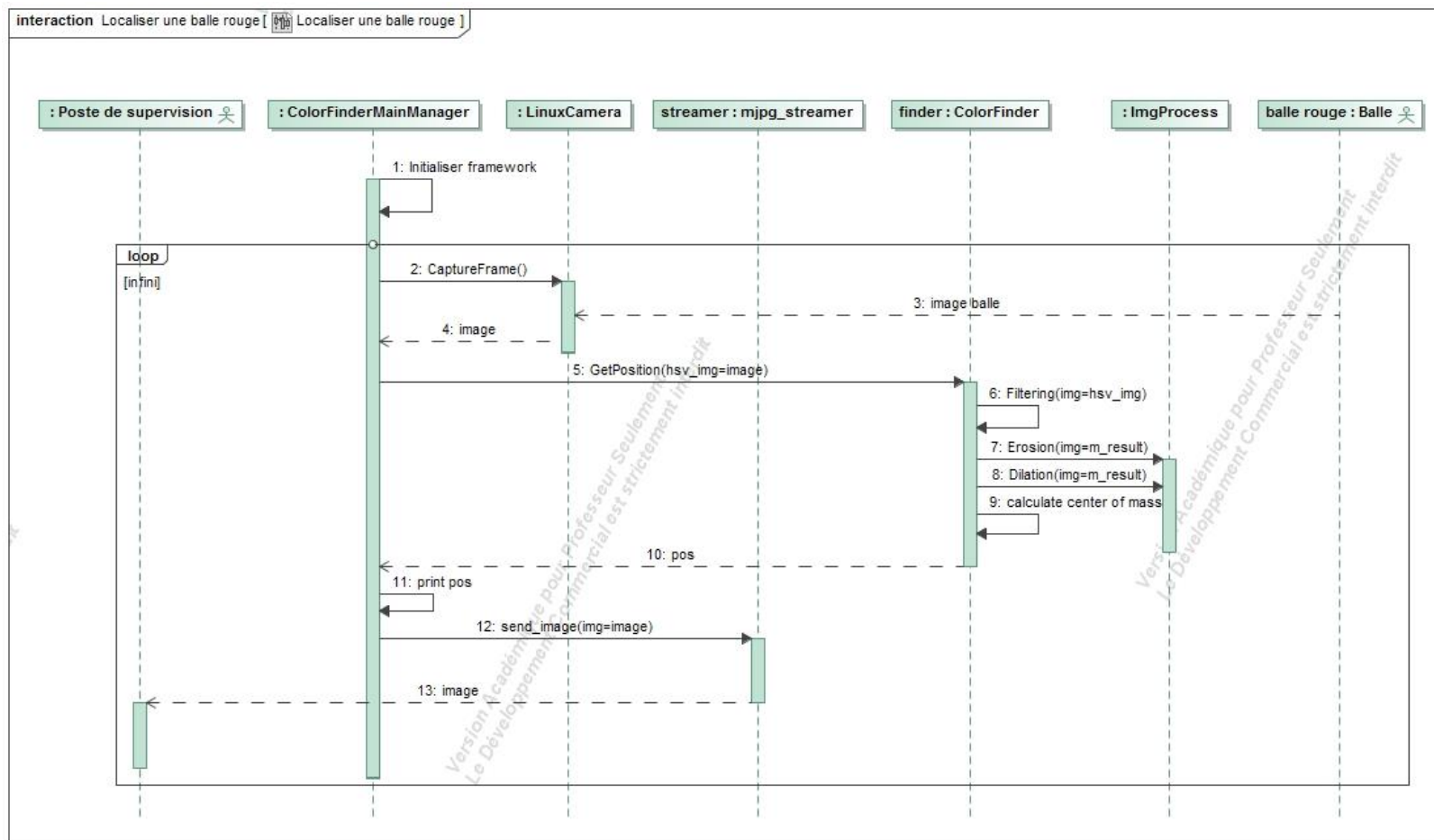




Diagramme de classe

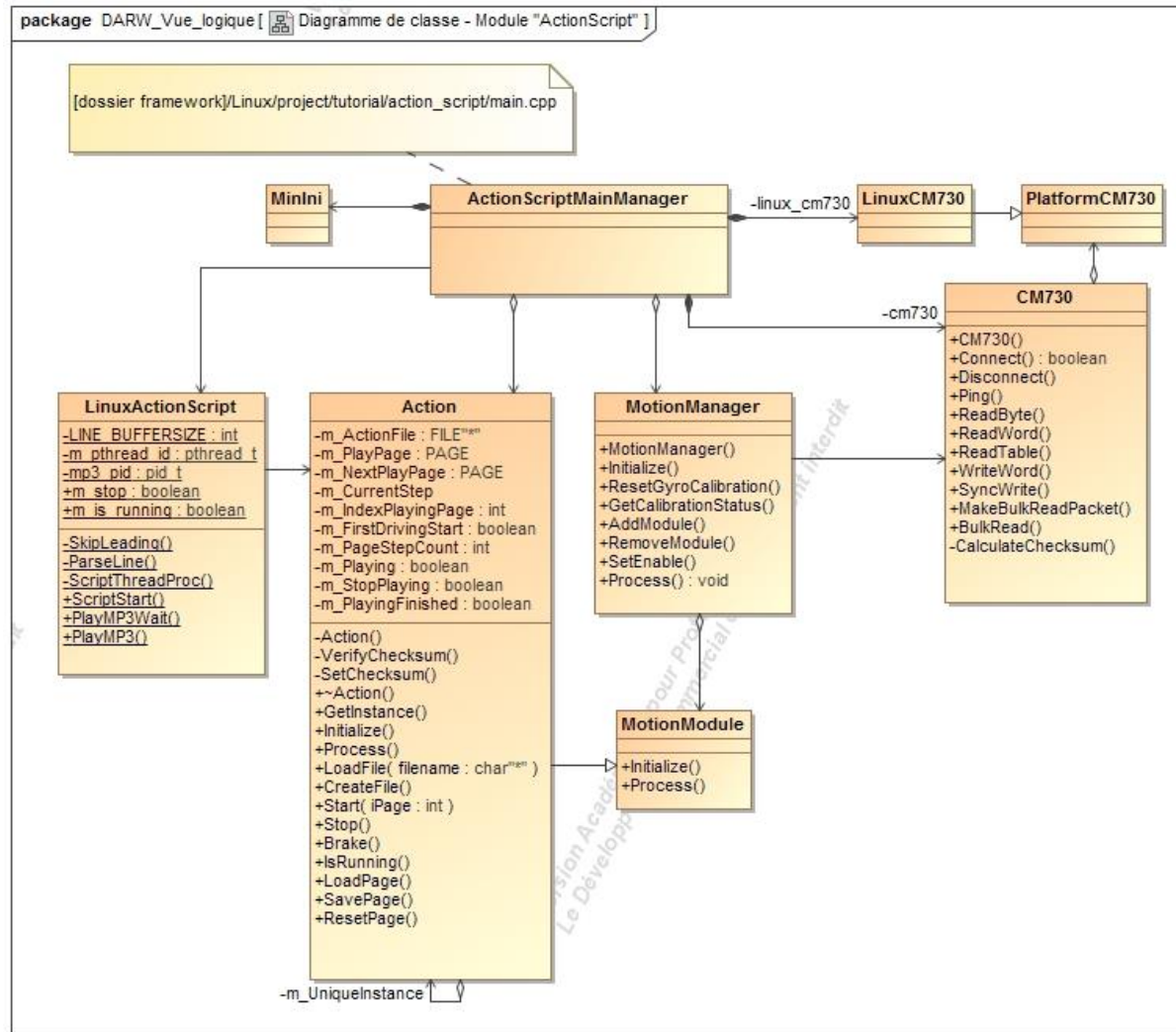




Diagramme de classes

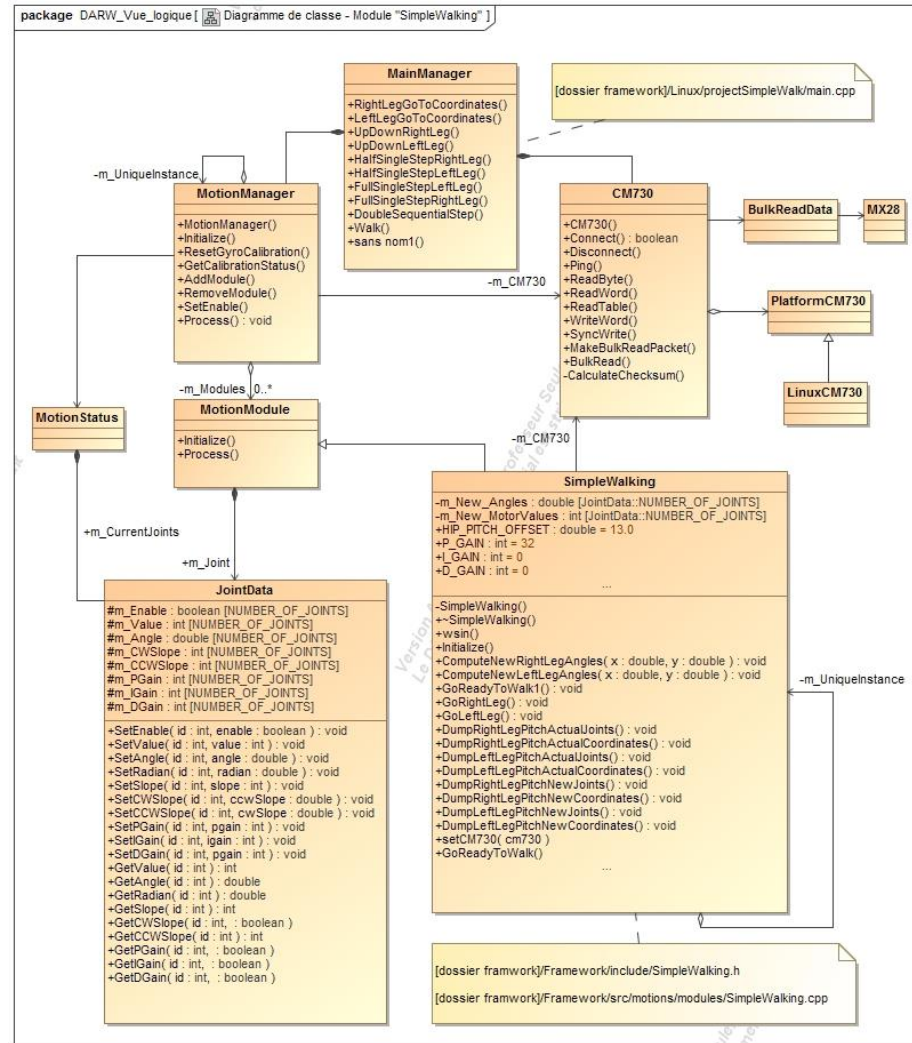




Diagramme de Déploiement

